

Our ethos

Learn
Dream
Achieve

Our school



Sharples
SCHOOL

Our values



Next Steps Evening 2025



Sharples
SCHOOL

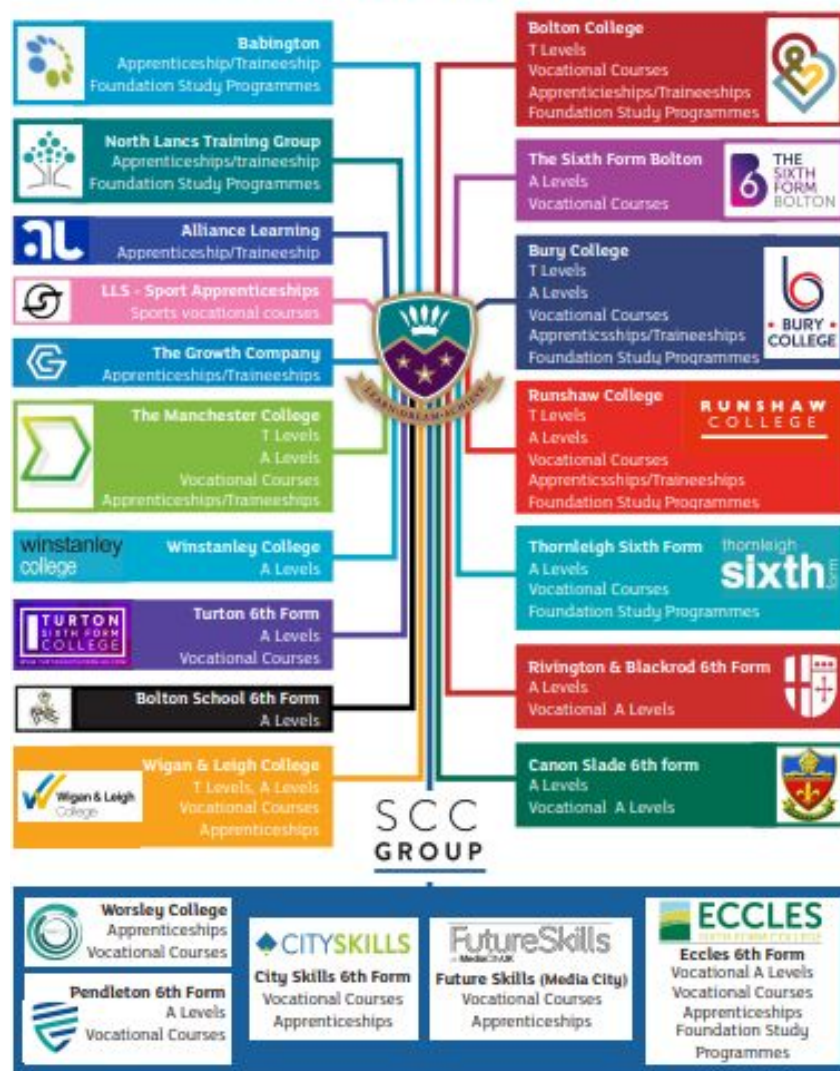
Post-16 pathways

Mr Savage: SLT Link for Year 11

Learn
Dream
Achieve



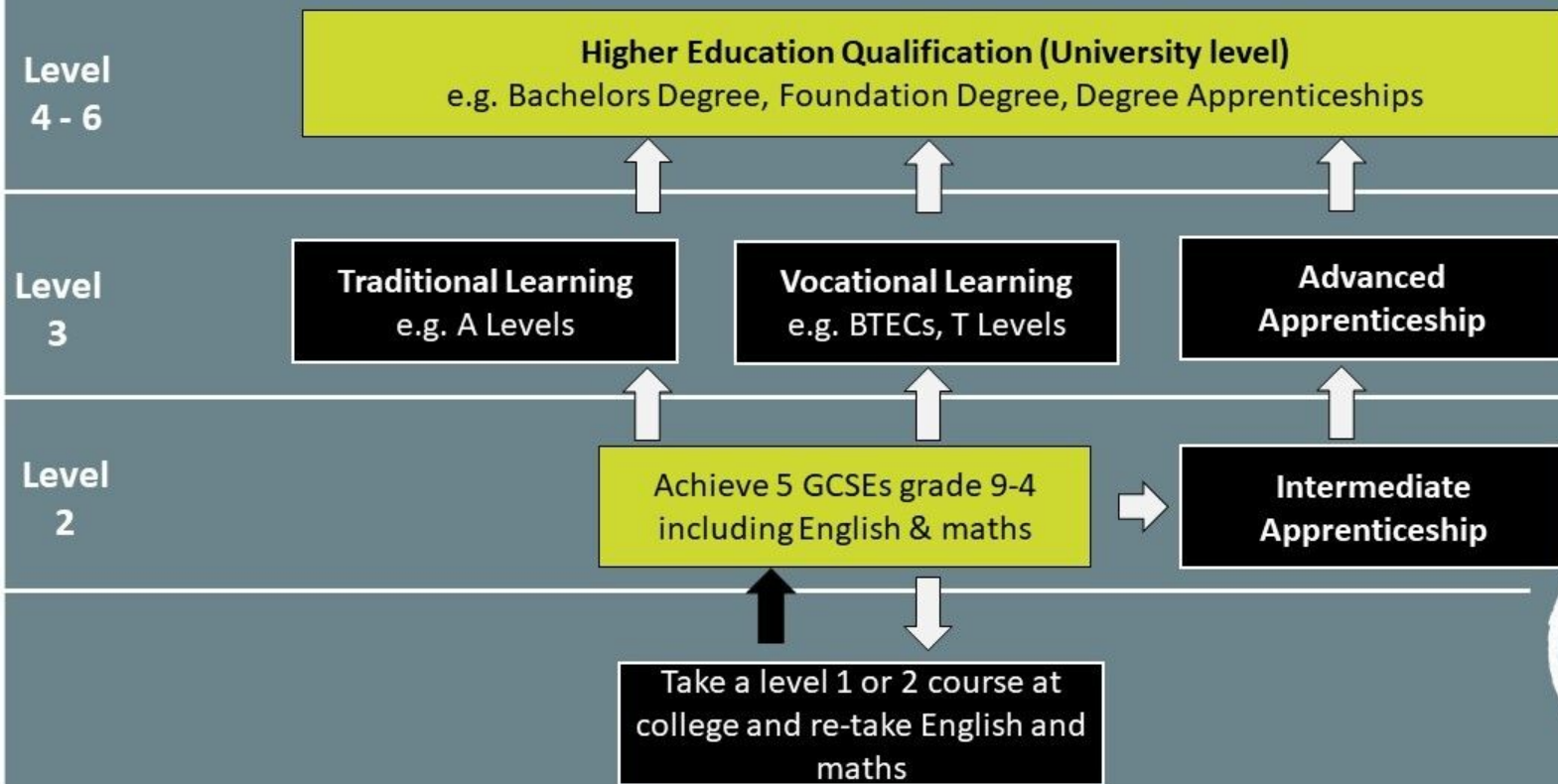
Potential next steps for YOU



What is available to your child?

- **College / Sixth form (96%)**
- **Job with training (2%)**
- **Full-time employment (1.6%)**
- **NEET (0.4%/1 student)**

What are your options?



Key questions

Course(s)?

Be ambitious

Colleges or Sixth Form?

Entry requirement for the choices?

Application deadlines?

Learn
Dream
Achieve

Day	Monday	Tuesday	Wednesday	Thursday	Friday
ALS 3.15 - 4pm	English Product Design Graphics (4-4.45)	Maths Product Design Fashion (4-4.45)	Art / Photography MFL* Engineering Computing / Business Drama * priority	Science	Art / Photography Catering Sport History - LSa



Day / Activity	Monday 10th	Tuesday 11th	Wednesday 12th	Thursday 13th	Friday 14th
Morning Exam 9am	Maths Paper 1 Exam (1 hour 30)	English Language Paper 1 Exam (1 hour 45)	Maths Paper 2 Exam (1 hour 30)	English Language Paper 2 Exam (2 hours)	Maths Paper 3 Exam (1 hour 30)
Break time followed by normal lessons / lunchtime					
P6	English Booster	Maths Booster	English Booster	Maths Booster	Normal Lessons
ALS	English	Maths	English	Maths	No ALS



Mathematics at Sharples School

Angela Hart: Director of Mathematics

Learn
Dream
Achieve



Mathematics GCSE 9-1 Qualification



Sharples
SCHOOL

Edexcel exam board

Three equally-weighted exam papers

- 1 hour 30 minutes each
- 80 marks each

Two tiers of entry:

- Higher – grades 3 to 9 are available.
- Foundation – grades 1 to 5 are available.

Learn
Dream
Achieve

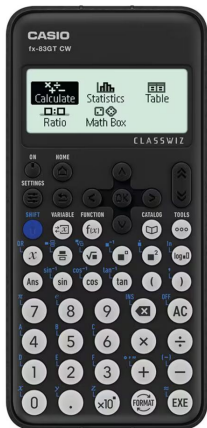


Mathematics GCSE 9-1 Qualification

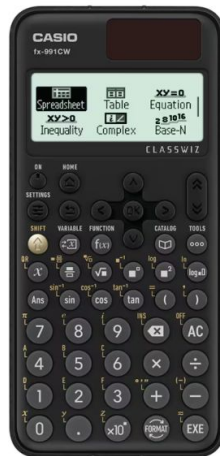
- One non-calculator paper
- Two calculator papers

We recommend that students have the following calculator:

Casio fx-85GT CW
(foundation)



Casio fx-991 CW
(higher)



How is your child supported in school?

- 5 lessons every week
- Form time maths every morning
- ALS every Tuesday 3.15-4.00 – compulsory for all students
- Lunchtime support session every Friday in G20 – open to all students
- Additional intervention opportunities
- Additional revision sessions prior to the exam



Sharples
SCHOOL

Learn
Dream
Achieve

How do we monitor student progress?

- Regular exam question practice in lessons to raise awareness of the style of question asked in the exam and develop exam technique.
- Regular form time mixed question assessments (based on common exam topics)
- End of unit assessments
- PPE mock exams
- Regular past papers in the run in to the summer exam.



Sharples
SCHOOL

Learn
Dream
Achieve

What should your child be working on independently?

- The best way to revise maths, is to practise maths.
Regular revision (little and often).
- Shared area includes all the resources your child should need. Full exam papers not necessary at this stage.
- Use the revision lists provided - challenge themselves.
- Attend revision support sessions with a list of topics or questions.
- Be resilient and pro-active
- Attempt all exam questions set

How can you support your child?

- Quiet space to revise
- Revision should have already started
- Take an active interest
- At least three hours per week



Sharples
SCHOOL

Learn
Dream
Achieve

Useful Websites



Sharples
SCHOOL

Sharples Student Shared Googledrive

Maths Watch - <https://vle.mathswatch.co.uk/vle/>

Corbett Maths – www.corbettmaths.com

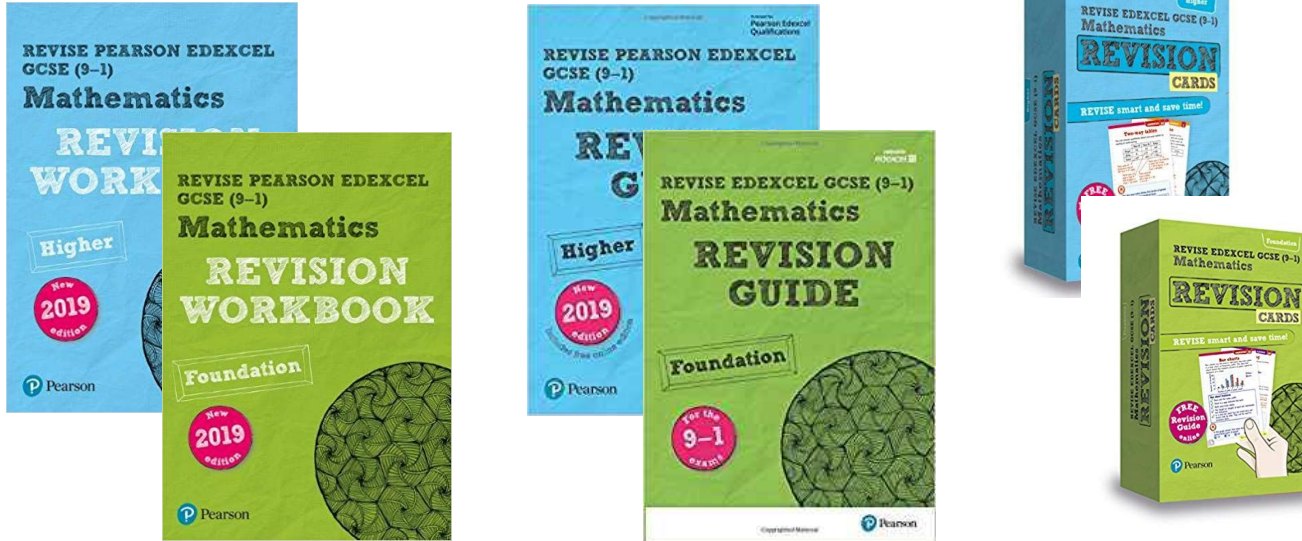
OnMaths - <https://www.onmaths.com/>

Third Space Learning -

<https://thirdspacelearning.com/gcse-maths/>

Learn
Dream
Achieve

Revision Resources



Learn
Dream
Achieve

What next?

- PPEs – 10th November - 14th November
- Revision list has already been shared. Copies available now if you want one.
- Student Google Drive has been populated with revision resources including knowledge organisers and exam questions with solutions.



Sharples
SCHOOL

Learn
Dream
Achieve

Thank you for listening.

Any Questions?

A.Hart@sharplesschool.co.uk



English at Sharples School

Miss A Amdavadi: Director of English

Learn
Dream
Achieve



English Literature



Sharples
SCHOOL

Paper 1 (2 hours)	Paper 2 (2 hours 30 minutes)
<p>Romeo and Juliet</p> <ul style="list-style-type: none">-Extract question (15 marks)-Whole play question (25 marks) <p>Anthology Poetry</p> <ul style="list-style-type: none">-Named poem (15 marks)-Comparison (25 marks)	<p>A Christmas Carol</p> <ul style="list-style-type: none">-Whole novella question (40 marks) <p>An Inspector Calls</p> <ul style="list-style-type: none">-Whole play question (40 marks) <p>Unseen poetry</p> <ul style="list-style-type: none">-Given poem (15 marks)-Comparison (25 marks)

Learn
Dream
Achieve

English Literature



Sharples
SCHOOL

Paper 1 (2 hours)	Paper 2 (2 hours 30 minutes)
<p>Romeo and Juliet</p> <ul style="list-style-type: none">-Extract question (15 marks)-Whole play question (25 marks) <p>Anthology Poetry</p> <ul style="list-style-type: none">-Named poem (15 marks)-Comparison (25 marks)	<p>A Christmas Carol</p> <ul style="list-style-type: none">-Whole novella question (40 marks) <p>An Inspector Calls</p> <ul style="list-style-type: none">-Whole play question (40 marks) <p>Unseen poetry</p> <ul style="list-style-type: none">-Given poem (15 marks)-Comparison (25 marks)

Learn
Dream
Achieve

Revising for English Literature

- Re-read the texts and poems
- Understand and know the key events in the texts
- Memorise key quotes
- Learn contextual information
- **Complete past paper questions in timed conditions**



Sharples
SCHOOL

Learn
Dream
Achieve

English Language



Sharples
SCHOOL

Paper 1 (1 hour 45 minutes)	Paper 2 (2 hours)
Reading Paper 1 -1 short story -5 questions (40 marks)	19th & 21st Century -2 extracts -6 questions (40 marks)
Narrative Writing -Pre-prepared (40 marks)	Transactional Writing -Any 2 out of 6 (20 marks each)

Learn
Dream
Achieve

Revising for English Language

- Pre-prepare your narrative and practice adapting it to different titles
- Know the structure and format of all 6 transactionals
- **Complete past paper questions in timed conditions**



Sharples
SCHOOL

Learn
Dream
Achieve

Revision Schedule

- Weekly Language and Literature homework
- Set every Monday, due every Friday

Friday Exams

- Multiple choice quiz every Friday
- 20 marks

ALS

- Compulsory ALS every Monday after school until 4:00pm

Key dates

- November - Language PPE
- January - Literature PPE
- March - Language PPE
- May - GCSE exams begin

Revision Resources

- Student resources folder (first port of call)
- Revision guides
- Knowledge Organisers
- Blended Learning Resources
- BBC Bitesize

Any questions?

Email me at:

a.amdavadi@sharplesschool.co.uk



Learn
Dream
Achieve



Revision Strategies

Miss Ayub - Extended Leadership Team

Learn
Dream
Achieve



Revision at Sharples

GCSE examinations are a marathon, not a sprint.

Preparation and revision needs to be spaced out, repetitive, meaningful and is essential to being successful at the end of this academic year.



Revision at Sharples

For pupils to succeed most effectively, it is crucial that parents and guardians are also investing in the success of their children by supporting revision strategies and techniques in their own time.

It is recommended that parents and carers ensure the time, place and space that revision is taking place in is thought out precisely.

Time

Time is set aside in the day and a bespoke revision timetable is designed to support the individual pupil.
An example has been provided in the booklet.

Place

The space that pupils are working in should be quiet and without distractions such as access to a phone (limited access) or TV.

Space

Revision should be regular and repetitive. Students should not revise one element of the topic and then abandon that piece of information. Regular, spaced revision is ideal for retention of knowledge.



Recommended Revision Techniques

1. Flashcards - readily available from reprographics
2. Mind maps / knowledge / brain dumps
3. Share the Knowledge - ask questions!
4. Utilise resources such as textbooks, classroom resources and the Shared Drive
Y11 - **Shared Drive**
5. Past Paper Questions
6. In school revision - ALS



Revision Timetable

When creating a revision timetable, it is recommended that:

1. Students plan specifically the time they will spend on their revision and the specific topic they will focus on.
2. Students should evaluate their own strengths and weaknesses to ensure the revision they are completing is most beneficial to them.
3. Students should consider other commitments e.g. ALS / mosque when creating the timetable.
4. Students should plan in breaks so that the time spent revising is productive and meaningful.
5. Revision should be being completed with minimal distractions e.g. limited phone access.

Revision Timetable



Sharples
SCHOOL

Monday	Tuesday	Wednesday	Thursday	Friday	Saturday	Sunday
6pm-7pm Maths Revision - Algebra	6pm-7pm Science Revision - Biology - genes	6pm-7pm English Language - writing a letter	6pm-7pm Maths Revision - Fractions	6pm-7pm Science Revision - Chemistry - Energy changes	12pm - 1pm Maths Revision - Transform ations	12pm - 1pm Maths Revision - Geometry
<i>Break between 7-7.30</i>	<i>Break between 7-7.30</i>	<i>Break between 7-7.30</i>	<i>Break between 7-7.30</i>	<i>Break between 7-7.30</i>	<i>Break between 1-1.30</i>	<i>Break between 1-1.30</i>
7.30-8.30	7.30-8.30	7.30-8.30	7.30-8.30	7.30-8.30	1.30-2.30	1.30-2.30
Romeo and	History	Computer	French	Computer	Romeo	English
Juliet revision - Character profiles	revision - feminism	Science	revision	Science	and Juliet revision - Themes	Language - writing a review
<i>Break between 8.30-8.45</i>	<i>Break between 8.30-8.45</i>	<i>Break between 8.30-8.45</i>	<i>Break between 8.30-8.45</i>	<i>Break between 8.30-8.45</i>	<i>Break between 2.30-3.30</i>	<i>Break between 2.30-3.30</i>
8.45-9.30 Homework	8.45-9.30 Homework	8.45-9.30 Homework	8.45-9.30 Homework	8.45-9.30 Homework	3.30-4pm Homework	3.30-4pm Homework
					4.30-5.30	4.30-5.30
					Science Revision - Physics -	Science Revision - Biology -

Learn
Dream
Achieve

TLC

Exams are stressful!

We all react differently when coming under pressure and dealing with stress.

Parents / carers should ensure that:

- Students have a healthy sleeping pattern, especially during mocks / exam season.
- Students should ensure they maintain a healthy diet, especially during exam season and ensure they are fuelled and prepared for the long day ahead.
- Stay hydrated!
- Students have someone to talk to during stressful times and make some time to relax.



Sharples
SCHOOL

Learn
Dream
Achieve