



The Duke of Edinburgh's Bronze Award Scheme at Sharples School.

Things to be aware of:-

- This is a weekly commitment in your own time to your three Activities. You **MUST** be sure you want to do this.
- Cost per student is £70 in total, including DofE enrolment fees and the Expedition.
- **Fees paid are not refundable, so you must be sure you want to commit to DofE.**
- First payment of £30 straight away. Final payment of £40 in February. Registration details will not be released until first payment is made, meaning you will not be able to begin using eDofE to log your activities.

Bronze Duke of Edinburgh's Award



This is a regular commitment in your own time.

EXPEDITION



VOLUNTEERING



PHYSICAL



SKILL



You must record evidence of your activity online
weekly.

and one
qualifying
expedition
(2 days for
the qualifying
one)

(1 hour per
week)
3 months

(1 hour per
week)
3 months

(1 hour per
week)
3 months

Plus an extra 3 months on any one of these

Bronze Duke of Edinburgh's Award



EXPEDITION



VOLUNTEERING



PHYSICAL



SKILL



We are now filling in your DofE Bronze Activity Planner with ideas of what you might be able to do. Don't worry, you can change your mind on these later, but you must put ideas down now. Use the DofE Programme Ideas sheet and the next three slides to help you.

Can be something new or
that you do already.

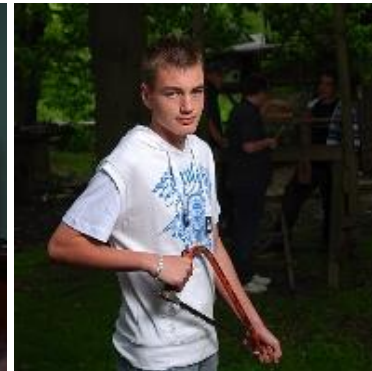
Physical

- Team sports
- Individual sports
- Water sports
- Racquet sports
- Dance
- Fitness
- Extreme sports
- Martial arts

Should be something organised, where an adult can
assess and confirm your participation.



- Creative arts
 - Performance arts
 - Science and technology
 - Care of animals
 - Music
- Or something new – as a beginner
- Life skills
 - Learning and collecting
 - Media and communication
 - Natural world
 - Games and sports



Volunteering

- Helping people
- Community action and raising awareness
- Coaching, teaching and leadership
- Working with the environment or animals
- Helping a charity or community organisation

Can be in school, eg helping at a club for year 7.

Can be out of school, eg helping at a primary school club, charity shop or helping coach younger children.



With all of your activities, you should be aiming to do something that can show continuous progress.

For example, if you want to play an instrument, you should be progressively learning new chords and songs, not just 'messing around' with an instrument.

Similarly, if you wish to choose to play football, it should be with a team rather than just playing with friends.

Preparation &

Training

After school sessions



Practice Expedition

1 day weekend



Qualifying Expedition

(Assessed)

2 day weekend





THE DUKE OF
EDINBURGH'S AWARD



Independence Resilience Teamwork

BRONZE

Volunteering **3** months

Physical **3** months

Skills **3** months

Expedition **2** days **1** night



PLUS a further 3 months in the Volunteering, Physical or Skills section.



THE DUKE OF
EDINBURGH'S AWARD



Independence Resilience Teamwork





DE | THE DUKE OF
EDINBURGH'S AWARD

Have fun!



How do I apply?

- Read the letter and discuss it with your parents/carers. (Letters given in form soon)
- Look on the DofE section of the school website.
- **Online Application Form submitted by the end of Friday 24th October.**
- Keep your DofE Bronze Activity Planner sheets from today's session. They will help with the Online Activity Form.