



Sharples

SCHOOL

Newsletter

Issue 563
10th July 2026

Year 10 Silver Duke of Edinburgh Qualifying Expedition – Peak District Adventure



Sixteen of our Year 10 students set off bright and early from Bolton train station on Saturday morning to begin their Silver Duke of Edinburgh Qualifying Expedition in the beautiful Castleton area of the Peak District.

Over three days, students demonstrated resilience, teamwork and independence as they navigated more than 37 kilometres of varied countryside, carrying all of the equipment they needed and preparing their own meals along the way.

On the first day, the groups embarked from a drizzly Grindleford train station, walking through open countryside alongside the River Derwent, before visiting the historic plague village of Eyam, where they completed a historical investigation. They then set off towards Wardlow. Along the route, they encountered some particularly protective cows and calves, adding an extra element of excitement to the day's adventure! After reaching their first campsite, having walked over 13 km, students pitched their tents, cooked their evening meals and settled in for an early night as the weather turned cold and wet.

... continued...

Sharples School, Hill Cot House, Hill Cot Rd. Bolton, BL1 8SN

Tel: 01204 333253

Fax: 01204 333250

www.SharpleSchool.co.uk



Sharples

SCHOOL

Newsletter



Day two brought the longest walk of the expedition, with a route of over 14km heading north towards Castleton via Tideslow Rake and the Limestone Way. Their efforts were rewarded with a spectacular descent into Castleton, passing beneath the impressive Peveril Castle. After another successful day of navigation, students enjoyed a well-earned evening relaxing in the sunshine at Pindale Campsite.

The final day saw the group walk just over 10km along the picturesque Hope Valley. Highlights included passing the remains of an old Roman fort, spotting a farm full of emus, and crossing the stepping stones over the River Noe. Arriving in Hathersage ahead of schedule, the students had time to enjoy a well-deserved snack before catching the afternoon train back to Bolton.

Throughout the expedition, our Year 10 students showed fantastic determination, teamwork and problem-solving skills, overcoming challenging terrain, changeable weather and long days of walking with enthusiasm and good humour. They should all be incredibly proud of their achievements, and we congratulate them on successfully completing their Silver Duke of Edinburgh Qualifying Expedition.

Sharples School, Hill Cot House, Hill Cot Rd. Bolton, BL1 8SN

Tel: 01204 333253

Fax: 01204 333250

www.SharplesSchool.co.uk



Sharples

SCHOOL

Newsletter

Congrats to Grace B - I Will Ambassador!

The following article was provided by Grace B.

I'm really glad to say that I've been selected as a 2026 #IWill ambassador!

I was selected out of an absolutely massive scale of candidates from all around the UK and Ireland and I was chosen for my contribution to promoting student wellbeing in and out of school through the Be Kind to My Mind campaign, which I now run with Bolton Youth Council. They were really keen to hear about how I've engaged in youth action for the past 2 years and how I've helped get the votes for 16 bill passed in parliament as a member of the campaigns steering group.

The #IWill Movement aims to encourage young people to take part in social action and speak their mind. We get hundreds of thousands of pounds in funding to make sure we can empower young people all across the UK!

In addition to this, I've been chosen to go on their residential where I will be able to network with other young people from all parts of the UK.

I'm really proud of this achievement because it's taken a lot of dedication to get into this program and it really blows my mind how they chose me over a massive amount of candidates. I'm so excited to see where this takes me and I will definitely mention this when I apply to be a purple and even a gold tie!





Sharples

SCHOOL

Newsletter

June Scientist of the Month

Massive congratulations to the 4 winners of last month's Scientists of the Month.

Year 7 - Rowan S - Enthusiastic about science and always revises his knowledge organiser!

Year 8 - Zainuddin B - Excellent participation in class!

Year 9 - Ahmed E - Delivered a presentation on Wind Energy to the entire class by himself!

Year 10 - Rayyan Y - Excellent attitude to learning and preparation for PPE was fantastic!

Nominees - Libby M, Tabitha G, Mason C, Aya EM, Riley F, Ayat H, Avyukt N, Scarlett H, Ayaan V, Amaan Y, Layla D, Ayaan S, Khadijah M, Jenson S, Zara K, Ibrahim A, Patrick W, Mustafa D.



English Department's Stars of the Week

Work of the Week

Year 7

Ammaarah I for great effort at directing a scene from Twelfth Night. [Click here to view the work.](#)

Year 8

Tombo A for his assessment feedback. [Click here to view the work.](#)

Year 9

Sophia Y for an excellent letter about being displaced which utilises emotive language. [Click here to view the work.](#)

Year 10

Luke T for his excellent speech! [Click here to view the work.](#)

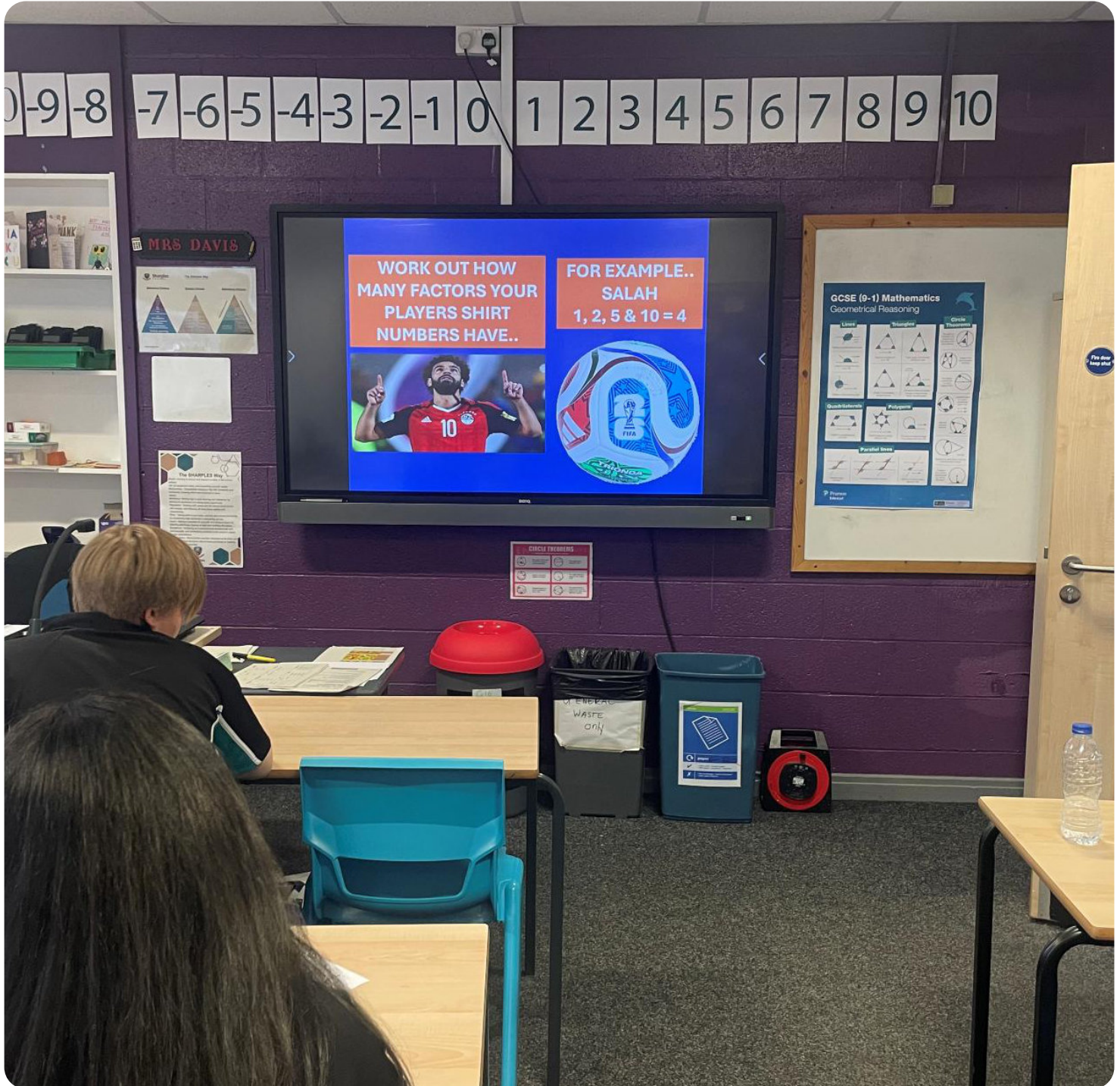


Sharples

SCHOOL

Newsletter

Football Themed Lessons in Maths



Pupils experienced a range of sports-related lessons on Sports Day, many of which had a football theme linked to the World Cup. One pupil created her own maths football game which her peers enjoyed playing.

Sharples School, Hill Cot House, Hill Cot Rd. Bolton, BL1 8SN

Tel: 01204 333253

Fax: 01204 333250

www.SharplesSchool.co.uk



Sharples

SCHOOL

Newsletter

Attendance Information

Reporting an absence:

If your child is too ill to attend school, please contact the school before 9.30am with full details of your child's illness/symptoms. The attendance email is the easiest way to contact school as the phone line can get very busy.

The school attendance email is: attendance@sharplesschool.co.uk

If we are unable to make contact and you do not provide a reason for your child's absence, this absence will be recorded as unauthorised.

Attendance Data

Year Groups attendance this week:

7 = 96.33%

8 = 93.88%

9 = 91.65%

10 = 91.67%

Best forms this week:

7Ples1 = 99.15%

8Ples1 = 96.72%

9Ples1 = 98.47%

10Ples1 = 98.47%

106 pupils have achieved 100% this academic year

Dates for your Diary

Monday 13th July:
Rewards day - Day 1

Monday 13th and
Tuesday 14th July:
Nuremberg School
visit

Monday 13th and
Tuesday 14th July:
Year 8 HPV
vaccinations

Tuesday 14th July:
Rewards day - Day 2

Wednesday 15th July:
Scholastic Book Fair.

Wednesday 15th July:
Year 10 mock results
morning

Career of the Week: App Developer

App developers design and build mobile applications for smartphones, PCs and tablets.

Average Salary: £ £31,000 £65,000
Starter Experienced

Typical hours:
(per week) 37 to 42

You could work: 9am to 5pm

Qualifications:

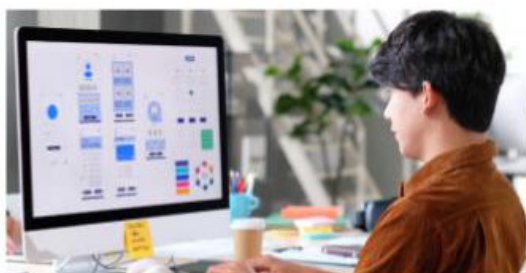
- You can apply for this job through a university course, an apprenticeship or a graduate training scheme.
- 4 or 5 GCSEs at grades 9 to 4 (A* to C) and A levels, or equivalent, for a higher or degree apprenticeship.
- 1 or 2 A levels, or equivalent, for a foundation degree or higher national diploma.
- 2 to 3 A levels, or equivalent, for a degree.

Skills required:

- Maths knowledge for understanding programming.
- The ability to write computer programs.
- Analytical thinking skills.
- To be thorough and pay attention to detail.
- The ability to come up with new ways of doing things.
- Knowledge of systems analysis and development.
- Complex problem-solving skills.

Relevant Subjects:

- English, Maths and Computing



Information sourced from: <https://nationalcareers.service.gov.uk/job-profiles/app-developer>



**Careers &
Enterprise**
at Sharples School

Sharples School, Hill Cot House, Hill Cot Rd. Bolton, BL1 8SN

Tel: 01204 333253

Fax: 01204 333250

www.SharplesSchool.co.uk



Sharples
SCHOOL

Summer SHOWCASE

Wednesday 15th July
7PM (DOORS OPEN 6.30PM)

With performances from:
Stave & Close, Sharples Voices,
Sharples Orchestra, Drama club,
CANTastic, Samba band plus a variety
of talented soloists.

TICKETS AVAILABLE ON MCAS

ADULTS: £3 UNDER 16: £1

Choices:
Only Choose One!

Trip Date:
Monday 13th July

Years 7,8,9,10
Ninja Warrior

Years 7,8,9,10
The Jumbles
Country Park

Years 7 & 8
Ten Pin
Bowling

Years 7,8,9,10
Blackpool
Pleasure
Beach

Years 9 &10
Trafford
Centre



Summer Reward Trips



Criteria:

Since Easter no more than 10 negatives and good attendance

Invited students will have the trips on their MCAS
Please see letter on MCAS for more details

Last Day for Payment:
Monday 23rd June



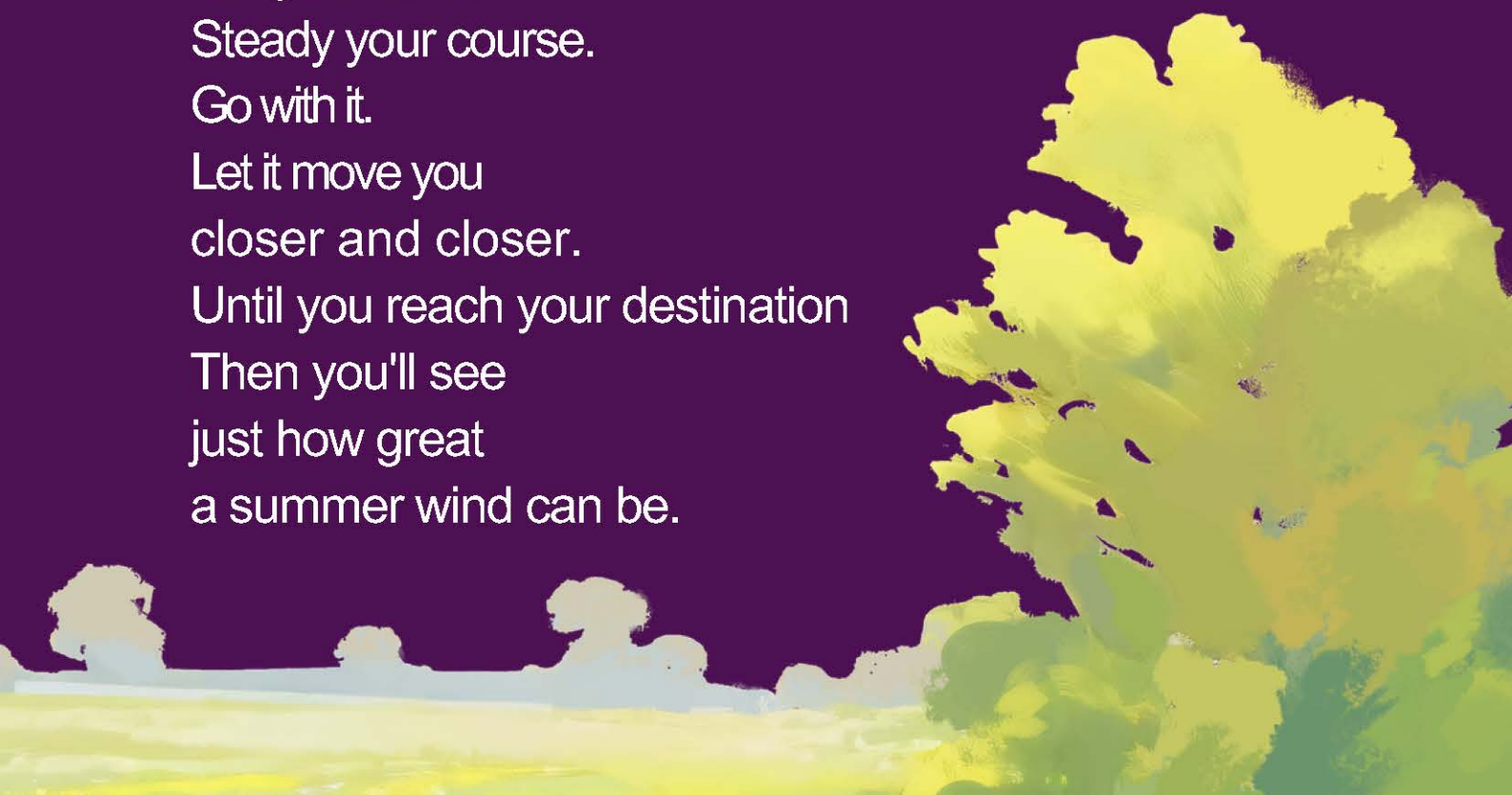
ENGLISH NEWSLETTER

FRIDAY 10TH
JULY

POEM OF THE WEEK

Sometimes
it's just a summer wind
blowing hard and strong
warm and dry.
Just hold on.
Brace yourself.
It'll lie down
when the sun sets.
It'll pass.
Don't let it overpower you.
It can't sway you.
Anchor it instead.
Set your sails.
Steady your course.
Go with it.
Let it move you
closer and closer.
Until you reach your destination
Then you'll see
just how great
a summer wind can be.

SUMMER WIND
KIESHA SHEPARD





ALICE IN WONDERLAND DAY

Early July is dedicated to Alice in Wonderland - so here's an extract from the story...

After following a talking rabbit, Alice has tumbled down a hole into a strange underground world. Alice was not a bit hurt, and she jumped up on to her feet in a moment: she looked up, but it was all dark overhead: before her was another long passage, and the White Rabbit was still in sight, hurrying down it. There was not a moment to be lost: away went Alice like the wind, and was just in time to hear it say, as it turned a corner, "Oh my ears and whiskers, how late it's getting!" She was close behind it when she turned the corner, but the Rabbit was no longer to be seen: she found herself in a long, low hall, which was lit up by a row of lamps hanging from the roof. There were doors all round the hall, but they were all locked; and when Alice had been all the way down one side and up the other, trying every door, she walked sadly down the middle, wondering how she was ever to get out again. Suddenly she came upon a little three-legged table, all made of solid glass: there was nothing on it but a tiny golden key, and Alice's first idea was that this might belong to one of the doors of the hall; but, alas! either the locks were too large, or the key was too small, but at any rate it would not open any of them. However, on the second time round, she came upon a low curtain she had not noticed before, and behind it was a little door about fifteen inches high: she tried the little golden key in the lock, and to her great delight it fitted!

Alice opened the door and found that it led into a small passage, not much larger than a rat-hole: she knelt down and looked along the passage into the loveliest garden you ever saw. How she longed to get out of that dark hall, and wander about among those beds of bright flowers and those cool fountains, but she could not even get her head through the doorway; "and even if my head would go through," thought poor Alice, "it would be of very little use without my shoulders. Oh, how I wish I could shut up like a telescope! I think I could, if I only knew how to begin." For, you see, so many out-of-the-way things had happened lately, that Alice had begun to think that very few things indeed were really impossible.





CELEBRATE THE WORLD CUP SYMMETRY

AN OPTIONAL HOMEWORK CHALLENGE!

Design or find a
FLAG

that has

1
LINE OF SYMMETRY

or

2
LINES OF SYMMETRY

or

4
LINES OF SYMMETRY

BE CREATIVE!



HAND YOUR ENTRY
TO YOUR TEACHER
FOR REWARD POINTS!

DEADLINE:
**MONDAY
13TH JULY**

SHOW YOUR TALENT, CELEBRATE SYMMETRY
AND THE BEAUTIFUL GAME!





MENU

KEY

5
A DAY

- 1 OF YOUR 5 A DAY



- CHEF'S CHOICE

MEAT FREE

- MEAT-FREE MONDAY



- PLANT-BASED (VEGAN)

Week 1	Monday	Tuesday	Wednesday	Thursday	Friday
Main Dish	Cheese Flan served with wedges & Fresh Salad £2.10	Sweet Potato Cottage Pie served with Veg £1.85	Beef Burger and Chips £2.10	Vegetable or Meat Lasagne served with Garlic Bread £2.10	Tugo Pizza Slice £1.50
Vegetarian Main Dish	Vegetable Biryani - £1.80	Vegetable Noodles £1.80	Battered Fish and Chips £2.10	Salt and Pepper Loaded Wedges £1.80	Spicy Bean Enchiladas £1.85
And There's More...	Panini - £1.85 Sandwich - £1.45-£1.85 Jacket Potato and Filling from - £1.85 Salad box - £1.90 Vegetables of the Day - 42p	Panini - £1.85 Sandwich - £1.45-£1.85 Jacket Potato and Filling from - £1.85 Salad box - £1.90 Vegetables of the Day - 42p	Panini - £1.85 Sandwich - £1.45-£1.85 Jacket Potato and Filling from - £1.85 Salad box - £1.90 Vegetables of the Day - 42p	Panini - £1.85 Sandwich - £1.45-£1.85 Jacket Potato and Filling from - £1.85 Salad box - £1.90 Vegetables of the Day - 42p	Panini - £1.85 Sandwich - £1.45-£1.85 Jacket Potato and Filling from - £1.85 Salad box - £1.90 Vegetables of the Day - 42p
Love Joes	Korma Curry Sauce and Rice - £1.90 Tikka Sauce and Rice Served with a Naan Bread - £1.90	Korma Curry Sauce and Rice - £1.90 Tikka Sauce and Rice Served with a Naan Bread - £1.90	Korma Curry Sauce and Rice - £1.90 Tikka Sauce and Rice Served with a Naan Bread - £1.90	Korma Curry Sauce and Rice - £1.90 Tikka Sauce and Rice Served with a Naan Bread - £1.90	Korma Curry Sauce and Rice - £1.90 Tikka Sauce and Rice Served with a Naan Bread - £1.90
Pasta King	Pasta Sauce of the Day with Garlic Bread - £2.10	Pasta Sauce of the Day with Garlic Bread - £2.10	Pasta Sauce of the Day with Garlic Bread - £2.10	Pasta Sauce of the Day with Garlic Bread - £2.10	Pasta Sauce of the Day with Garlic Bread - £2.10
Dessert	Fruit Pots - 55p-75p Cake of the Day - 72p Cookie - 50p Large Cold Dessert - £1.10 Hot Pudding - 90p	Fruit Pots - 55p-75p Cake of the Day - 72p Cookie - 50p Large Cold Dessert - £1.10 Hot Pudding - 90p	Fruit Pots - 55p-75p Cake of the Day - 72p Cookie - 50p Large Cold Dessert - £1.10 Hot Pudding - 90p	Fruit Pots - 55p-75p Cake of the Day - 72p Cookie - 50p Large Cold Dessert - £1.10 Hot Pudding - 90p	Fruit Pots - 55p-75p Cake of the Day - 72p Cookie - 50p Large Cold Dessert - £1.10 Hot Pudding - 90p

GRAB SOME STREET FOOD FOR HEALTHY MEALS ON THE GO





Mellors
FOOD
HAPPY

THE GREAT TENNIS BALL HUNT

ACE YOUR LUNCH – THIS JULY



THE TASK:

Every Wednesday in July we will hide a Mellors tennis ball somewhere around your School dining area - can you find it?



THE PRIZE:

Found a Mellors tennis ball?

You've won a Free Lunch to the value of £2.61

Bring the tennis ball to a member of the Catering Team and tell us where you found it to claim your prize.





Have a

SMASHING LUNCH

DURING JULY

Mellors
FOOD
HAPPY



MAIN

**LOOK OUT FOR THE NEW
SUMMER ROAST BAGUETTE**

£2.10

WIMBLEDON BUFFET BOX

£2.10

DESSERT

ETON MESS MUFFINS £1.00

ETON MESS POTS 75p

STRAWBERRY & CREAM CUPCAKES

£1.00



WE'RE HIRING



YOUNG INFLUENCERS



**Want to make real change?
Want your voice to be heard?**

**Join Khulisa's Youth Voice and help
shape the future for young people.**

- We're looking for 15 young people (aged 13–25)
- Share your ideas, lead projects & influence decisions
- Get involved in campaigns, strategy & recruitment
- £10/hour for project work + expenses covered



No experience needed - just passion and ideas

Monthly online meetings + 2 in-person youth days a year

Open to young people across the UK
(London & Manchester encouraged)

DEADLINE: 10 AM, MONDAY 20TH JULY

RECRUITMENT@KHULISA.CO.UK


OPEN WATER CAN BE DANGEROUS



THINK TWICE. STAY OUT. STAY SAFE.

LOCAL AREAS OF CONCERN

These sites have been identified by partner agencies due to kids frequenting and going in the water.

 **THORNS CLOSE, ASTLEY BRIDGE**
A brook with fast flowing water which is attracting young people.




 **'BLUE LAGOON' – WATER SITE
OFF STONES BANK ROAD, EGERTON**
Reported gatherings of 200/300 people, with young people swimming. This is just over the border to us but may include some of our young people.



 **DOFFCOCKER AND MOSES GATE**
Both have water sites.



 **JUMBLES**
Attracting kids to jump into the water with the warm weather.



WHY OPEN WATER CAN BE RISKY



Fast flowing water can sweep you off your feet.



Cold water shock can affect your body even on warm days.



Hidden dangers like deep water, rocks and debris.



No lifeguards. No one to help if something goes wrong.



In an emergency, call 999.



**LOOK OUT FOR YOUR FRIENDS.
STAY SAFE. STAY OUT.**



YEAR 11 SUMMER PROGRAMME

EXPLORE YOUR FUTURE.
DISCOVER YOUR POTENTIAL.

Any students interested need to email
Sarah Seed the project Coordinator:
Sarah.Seed@bolton.gov.uk

**10 WEEKS
STARTING
FRIDAY
26TH JUNE**



**LUNCH
PROVIDED**
Each day



**TRANSPORT
PROVIDED**
Across lots of
different areas
in Bolton



**HANDS-ON
EXPERIENCES**
Explore real
careers and
workplaces



**YOUR FUTURE
YOUR CHOICE**
Build skills,
confidence and
make connections

WEEKLY SESSIONS – 10 WEEKS OF EXPLORING DIFFERENT CAREER AREAS

DATE	TIME – ARRIVE AT BASE	ACTIVITY	DETAILS
Friday 26/6	10.00am	Sports – Crown bowling, BWITC tour	Crown Green bowling at a local club will be followed by lunch and a tour of the Bolton Wanderers Football Stadium.
Friday 3/7	10.00am	Enhancing Lives – Health & Social Care setting	Spending the day with the wonderful staff and individuals at enhancing lives a supported day care provision. Home Enhancing Lives
Friday 10/7	10.00am	Cookery	Spend a day learning what it takes to become a chef, the skills needed and the routes you could take all while making delicious food to eat and take away!
Friday 17/7	9.15am	Teambuilding – Water sports and Orienteering away day.	Visiting Bibby's Farm Scout Camp to engage in a morning of water based activity, Kayaking and rafting followed by lunch and orienteering. (Individuals will need to bring a change of clothes and trainers they don't mind getting wet, they cannot wear crocs or sandals in the water!)
Friday 24/7	10.30am	Animal Care	Exploring a local animal sanctuary to see what is involved in working or volunteering with animals.

DATE	TIME – ARRIVE AT BASE	ACTIVITY	DETAILS
Friday 31/7	9.15am	Horticulture	Visiting RHS Bridgewater gardens to explore Careers in horticulture, where its like to work in the field and meet the people who have made this their chosen path.
Tuesday 4/8	10.00am	Policing and Law	Visiting the Law museum in Manchester to learn about the different careers and routes that this area offers.
Friday 7/8	10.00am	Interior Design Overbury	Visiting the head office for a large high end interior design company, seeing how you can get to work somewhere like this and what roles you could do.
Friday 21/8	10.00am	Music & Film	The Ramp at Horwich is a busy vibrant music venue with lots of ways you could work in the industry come along and see if this could be a career idea or a volunteering opportunity in the future.
Friday 28/8	9.30am	Construction Skills Centre	A trip out to our Construction partners education centre to get some hands-on experience laying bricks and looking at the construction field, what's involved and how to get into it.



**YOU CHOOSE – YOU DON'T HAVE TO ATTEND EVERY SESSION.
SIGN UP TO ANY SESSIONS YOU WOULD LIKE TO ATTEND!**



YOUTH ZONE

Deaf Accessible Sessions

Juniors ages 5 - 12 yrs
Every Saturday 2pm - 4pm

**JOIN
NOW**



To register contact
donna@deafvillage.org

Youth Zone Blackburn Jubilee St, Blackburn BB1 1EP

FREE



YOUTH ZONE

Deaf Accessible Sessions

Youth ages 13yrs-19yrs
Tuesdays 7th July - 4th August
6:00 pm - 8:00 pm

JOIN NOW



To register contact
donna@deafvillage.org

Youth Zone Blackburn Jubilee St, Blackburn BB1 1EP



FREE



COMMUNITY
LOCKER

**“PROVIDING EVERYTHING A CHILD NEEDS
TO ACCESS SCHOOL”**

HOW IT WORKS

HOW WE GET OUR SUPPLIES

THE PUBLIC AND BUSINESSES DONATE ITEMS, WE ALSO RECEIVE FUNDING TO BUY NEW ITEMS.

WHO CAN JOIN?

ANYONE IN RECEIPT OF AN INCOME RELATED BENEFIT CAN JOIN, YOU’LL NEED TO REGISTER WITH US ON YOUR FIRST VISIT.

WHATS AVAILABLE TO BUY?

PRELOVED UNIFORM AND SCHOOL SUPPLIES STARTING FROM 20P

NEW ITEMS ARE AVAILABLE AT ⅓ OF THE COST

TOILETRIES AND HOUSEHOLD CLEANING PRODUCTS AVAILABLE FROM 50P

SANITARY ITEMS

AVAILABLE FOR FREE

DAY TIME APPOINTMENTS

WE HAVE LIMITED DAYTIME APPOINTMENTS AVAILABLE. TO BOOK A SLOT PLEASE EMAIL HELLO@COMMUNITYLOCKER.CO.UK

WHERE TO FIND US

KINGS CHURCH BOLTON, THE MILL, BL2 6QE. NEXT DOOR TO THE COMMUNITY GROCERY

**FOR OPENING DATES, EVENTS
AND MORE CHECK OUT OUR
WEBSITE**





**DONATE YOUR NEW OR GOOD CONDITION PRIMARY OR
SECONDARY SCHOOL UNIFORMS FOR ALL SCHOOLS IN
BOLTON**



SHOES/TRAINERS



BAGS



COATS



P.E. KITS



ALL UNIFORM



**SCHOOL SUPPLIES/
STATIONERY**

DROP OFF POINT

MAIN RECEPTION
MON-FRI 9:30-4:30PM
KINGS CHURCH BOLTON
THE MILL, BL2 6QE
or email us for more options

