



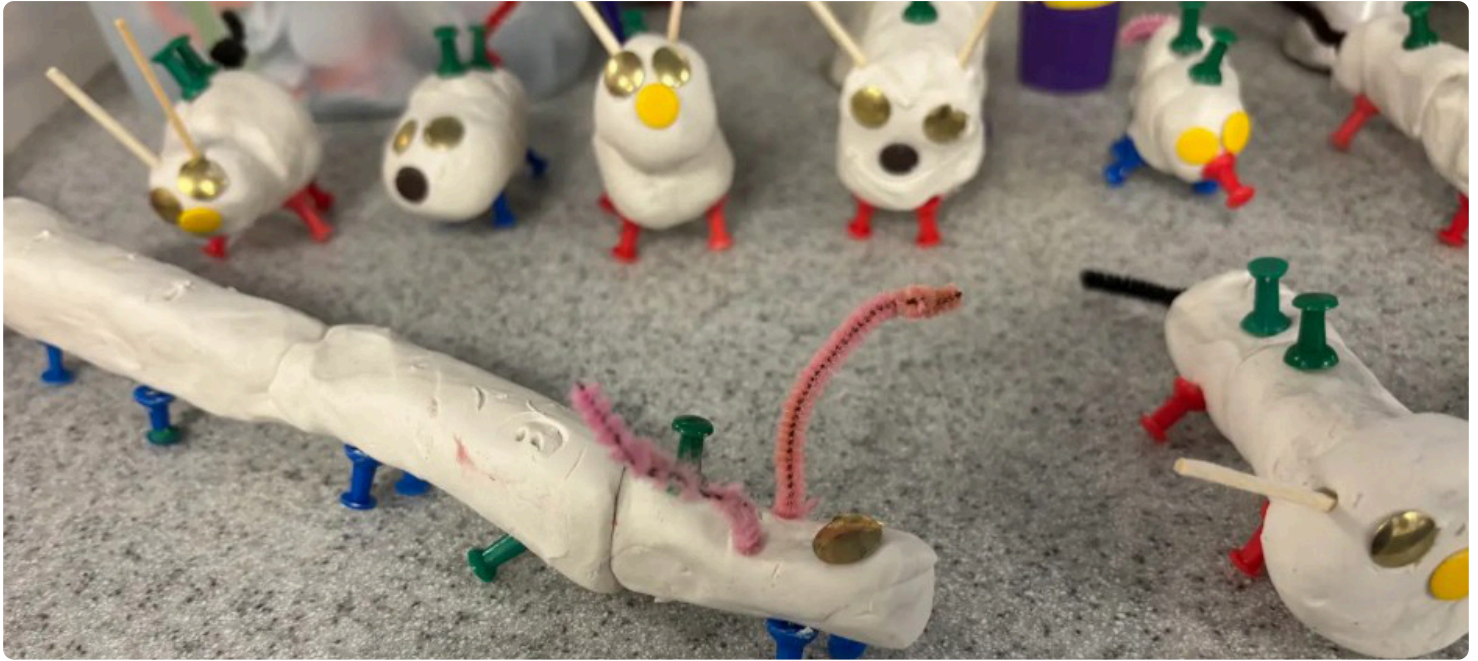
# Sharples

## SCHOOL

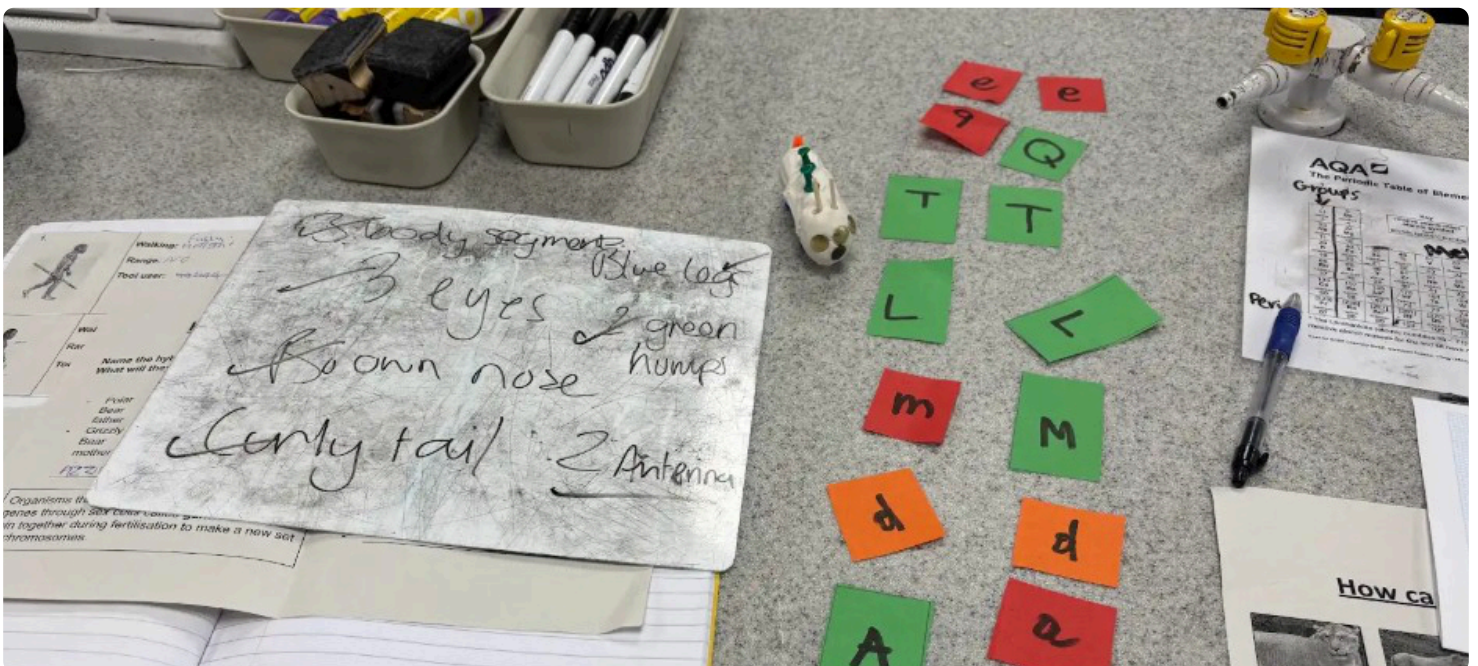
### Newsletter

Issue 543  
23rd January 2026

#### This Week in Science



Pupils in Year 8 brought the study of genetics to life this week by exploring the rules of heredity. After learning about the interactions between dominant and recessive alleles, students built their own 'Plasbots,' (as pictured above) mixing and matching distinct characteristics like number of antennae and eye color (as below). The lesson culminated in a mathematical challenge, where students used Punnett Squares to predict the probability of traits appearing in future generations of Plasbots.



Sharples School, Hill Cot House, Hill Cot Rd. Bolton, BL1 8SN

Tel: 01204 333253

Fax: 01204 333250

[www.SharpleSchool.co.uk](http://www.SharpleSchool.co.uk)



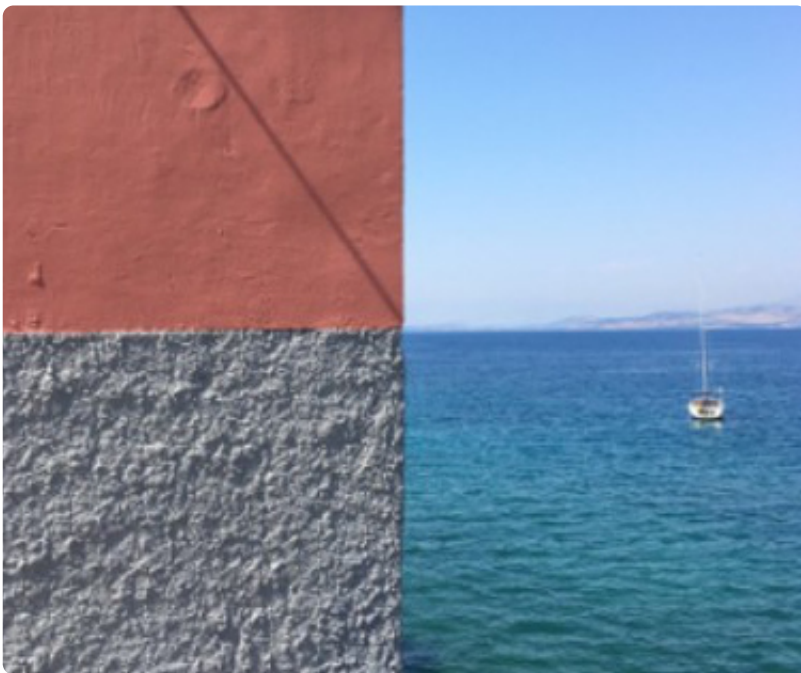


# Sharples

## SCHOOL

### Newsletter

#### Maths Optional Homework



This week, both of our optional homework tasks have been launched.

Year 7 students have been asked to find or take a photograph and identify as many aspects of maths within it as possible (example above). Students in Years 8–10 have been asked to take one photograph that looks like two (example left).

More information can be found on Student Portal. If you have any questions, please speak to Mrs Helm in U27. We would love to see as many entries as possible.



# Sharples

## SCHOOL

### Newsletter

#### English Department's Star of the Week

##### Work of the Week

Year 7

Natasha for a super effort using quote explosions and descriptive language. [Click here to view the work.](#)

Year 8

Hamza Y for his excellent work on form and structure in poetry. [Click here to view the work.](#)

Year 9

Ahmed E for their excellent analysis in their poetry lesson. [Click here to view the work.](#)

Year 10

Benedict for his excellent first attempt at an independent 15 mark GCSE poetry response. [Click here to view the work.](#)

Year 11

Saarah A for her excellent homework this week! [Click here to view the work.](#)

##### Readers of the Week

Year 7

Bilal J for always being enthusiastic to read aloud in class, and does so with increasing expression.

Year 8

Riley F for playing a frantic Mickey from Blood Brothers.

Year 9

Pinklily T for playing a passionate Mico from The Jungle.

Year 10

Bailey G for dramatic reading of A Christmas Carol.

Year 11

Hamzah M for always reading out his answers.





# Sharples

## SCHOOL

### Newsletter

#### Sharples Gymnast



Congratulations to Grace W (pictured) who competed in the Miss National Gymnastics Association UK Invitational competition in Bristol over the weekend. Due to her skill and determination, Grace received 3 medals: 3rd on bars, 3rd on vault and 5th overall. Well done and good luck for the next one.

Sharples School, Hill Cot House, Hill Cot Rd. Bolton, BL1 8SN

Tel: 01204 333253

Fax: 01204 333250

[www.SharplesSchool.co.uk](http://www.SharplesSchool.co.uk)





# Sharples

## SCHOOL

### Newsletter

#### Dates for your Diary

Tuesday 27th Jan:  
Rotary Youth Speaks  
Competition, Bolton  
Heat (16:30 – 20:30)

Wednesday 28th Jan:  
Year 11 Intermediate  
Maths Challenge  
(11:15 – 12:15)

Wednesday 28th Jan:  
Football tournament at  
Ladybridge (15:00 –  
17:30)

Wednesday 28th Jan:  
Rotary Youth Speaks  
Competition, Bolton  
Heat (17:00 – 20:30)

Friday 30th January:  
Year 7 Sleep at The  
Deep - Girls

#### Attendance Information

Reporting an absence:

If your child is too ill to attend school, please contact the school before 9.30am with full details of your child's illness/symptoms. The attendance email is the easiest way to contact school as the phone line can get very busy.

The school attendance email is: [attendance@sharplesschool.co.uk](mailto:attendance@sharplesschool.co.uk)

If we are unable to make contact and you do not provide a reason for your child's absence, this absence will be recorded as unauthorised.

#### Attendance Data

Year Groups attendance this week:

7 = 94.19%  
8 = 96.93%  
9 = 93.53%  
10 = 94.81%  
11 = 90.90%

Best forms this week:

7Shar3 = 98.55%  
8Shar5 = 100%  
9Ples2 = 97.12%  
10Ples1 = 98.13%  
11Ples2 = 98.20%

269 pupils have achieved 100% this academic year

#### Career of the Week: Health Visitor

*They work with families with a child aged 0-5 to identify health needs, promote healthy lifestyles and prevent illness.*

Average Salary: £ £39,000 £55,000  
Starter Experienced

Typical hours:  
(per week) 38 to 42  
a week

You could work: evenings  
on a rota



#### Qualifications:

- You need to be a registered midwife, adult, child, mental health or learning disability nurse to apply for a health visiting training programme.
- 5 GCSEs at grades 9 to 4 (A\* to C), or equivalent, including English, maths and science.
- 2 or 3 A levels, including a science, or a level 3 diploma or access to higher education in health, science or nursing.

#### Skills required:

- Customer service skills.
- The ability to work well with others.
- The ability to use your initiative.
- To be flexible and open to change.
- Sensitivity and understanding.
- To enjoy working with other people.
- The ability to come up with new ways of doing things.

#### Relevant Subjects:

- Science, Health and Social Care, Maths and English.

Information sourced from: <https://nationalcareers.service.gov.uk/job-profiles/health-visitor>



Careers &  
Enterprise  
at Sharples School

Sharples School, Hill Cot House, Hill Cot Rd. Bolton, BL1 8SN

Tel: 01204 333253

Fax: 01204 333250

[www.SharplesSchool.co.uk](http://www.SharplesSchool.co.uk)



# Sharples

## SCHOOL

### Newsletter



#### PE Lunch Time Clubs - This Half Term

MONDAY	TUESDAY	WEDNESDAY	THURSDAY	FRIDAY
Y7 Football (Big Astro) - AHM	Y8 Football (Big Astro) - PGR	Y7 Football (Big Astro) - AHM	Y8 Football (Big Astro) - AHM	Y9 Football (Big Astro) - AHM
Y11 Football (Small astro) JBA	Y10 Football (Small astro) JBA	Y11 Football (Small astro) JBA	Y11 Football (Small astro) JBA	Y11 Football (Small Astro) - JBA
Netball Yr 7/8 (SH) - LAL	KS3 Dodgeball (SH) - LAL/AHM	Just Dance- all years (SH) - LAL/PGR	Basketball (SH) - LAL	Y7 Girls Football (SH) - LAL
	Sports studies catch up/KS3 hmwk- AHM			



#### PE After School Clubs - This Half Term

MONDAY	TUESDAY	WEDNESDAY	THURSDAY	FRIDAY
Y7 Football practice	Y8 Football practice	KS3 girls Swimming Club	KS4 Fitness Suite- SHAR	PE detentions
KS3 boys Swimming Club	KS4 Fitness Suite- SHAR	Y9/10 Football Practice	Y7 Girls football tournament @ Ladybridge	
Netball - all years	Running Club- all years	Y8 football tournament @ Ladybridge	U14 basketball @ Smithills	
KS3 & KS4 Girls football v Rivington (h)		KS4 Fitness Suite- Girls		

Week beginning 26th Jan

Sharples School, Hill Cot House, Hill Cot Rd. Bolton, BL1 8SN

Tel: 01204 333253

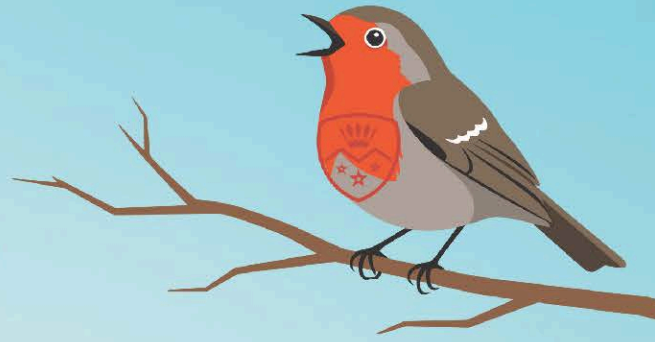
Fax: 01204 333250

[www.SharplesSchool.co.uk](http://www.SharplesSchool.co.uk)



# ENGLISH NEWSLETTER

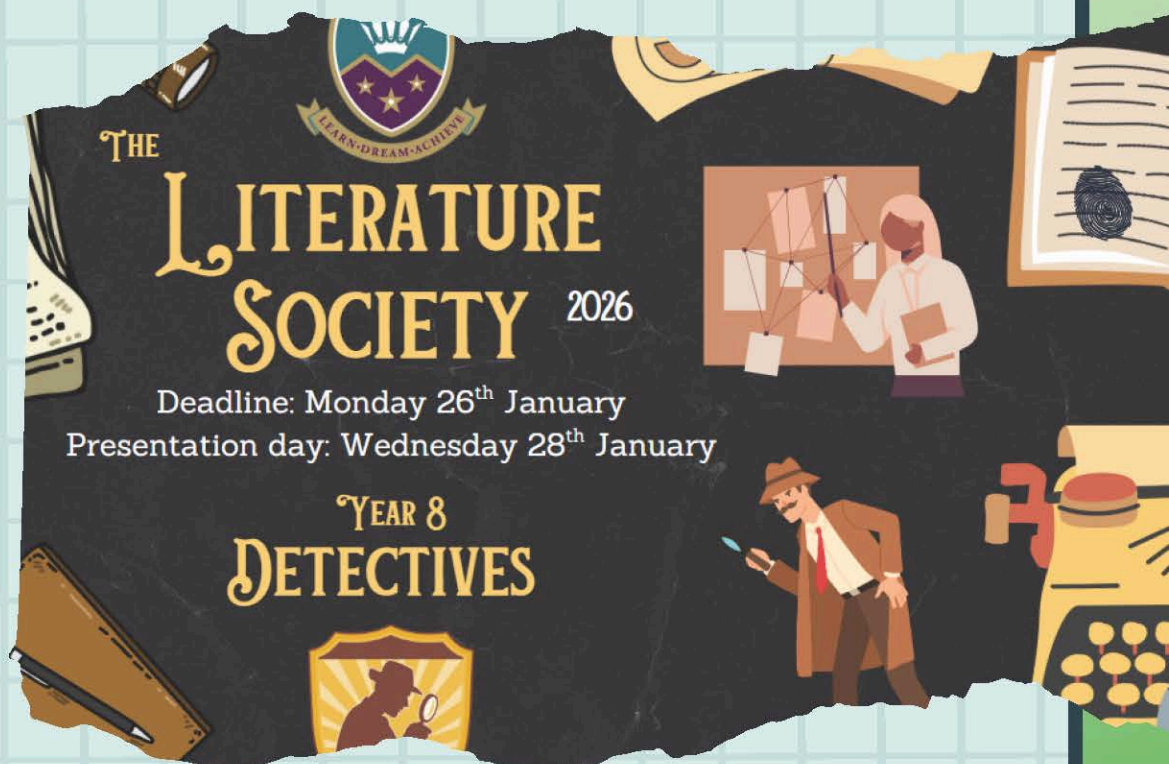
FRIDAY 23<sup>RD</sup> JAN



## YEAR 8 LITERATURE SOCIETY: DETECTIVES DEADLINE

Many Year 8s have been working hard to complete projects for Lit Society, we've already had projects brought in ready for the presentations next week!

If you're still working on your project, add the finishing touches and bring it in for the lunchtime presentation in the library on Wednesday 28th!





# YOUNG POET LAUREATE

National  
Literacy  
Trust

Change your story

Do you want to become the next Poet Laureate  
for Bolton?

All you have to do is:

A short letter explaining why you would like  
to be Young Poet Laureate for your region  
(max 200 words)

An original poem on any topic (max 40 lines)

**Deadline: 29th January 2026**

Hand your entries to Miss Patel (U14)

*"Poetry is something where one quiet voice  
can become a loud voice and can be heard..."*





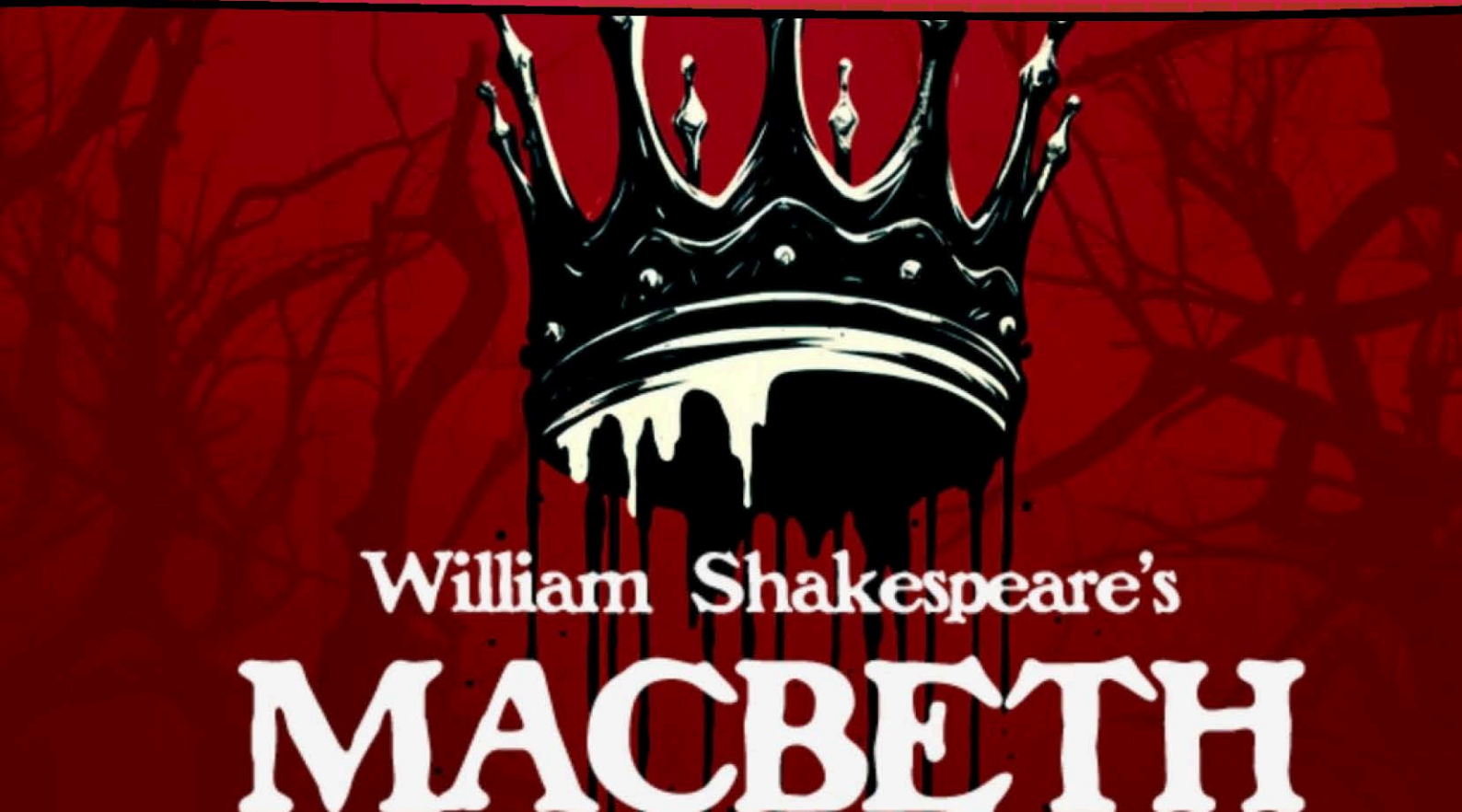
# MACBETH THEATRE TRIP



Year 8 have an exciting opportunity  
but you must act quick!

Since our pupils are studying Macbeth  
this term there will be a trip to  
Octagon Theatre to watch the play  
live on stage.

This is on a first come first serve  
basis with only 20 places! Get your  
permission slips in to Mrs Topham,



William Shakespeare's  
**MACBETH**



## PUPIL SHOUTOUT - HANDWRITING



Well done to Year 7 pupils  
(Dylan S, Junior M, and Harry D) for making  
great progress in their handwriting recently.  
They were presented with a certificate of  
achievement and a new fancy pen to keep up  
their good work!  
We hope there will be many more students  
following in their footsteps over the coming  
weeks and months.





## WHAT ELSE IS ON?

### Books and Biscuits



Anime Club Wednesday  
lunch in U15 -

Great to see so  
many join us on the  
first weeks back!

## WORD OF THE WEEK

### Tenacious

= Holding firmly to  
something;  
persistent

E.g. He was  
tenacious in fighting  
for his rights."

## SHARPLES RADIO

The Sharples Radio team have  
been busy making monthly  
podcasts. All podcasts can be  
found on the Student Voice page  
of the school website.

[https://www.sharplesschool.co.uk  
/student-voice/](https://www.sharplesschool.co.uk/student-voice/)





Gallop into the  
**LUNAR  
NEW YEAR**

*Mellors*  
**FOOD  
Happy**

10th February

# Coming soon!

We're always looking for ways to make you 'Food Happy'.

Did you know we run special themed meals (at least) every month?

Coming up...

This February, trot on over for some delicious Chinese foods, and learn about new cultures and traditions, as we embrace the Year of the Horse.



Saddle up for our special themed menu!



# BE A HIGH-FLYER... A HEALTHY SCHOOL LUNCH SUPPORTS YOUR LEARNING!

Week 1	Monday	Tuesday	Wednesday	Thursday	Friday
Main Dish	SAUSAGE & MASH £1.85 	CHINESE CURRY OF THE DAY £2.10 	CRISPY BATTERED FISH & CHIPS £2.10 	HOMEMADE MACARONI CHEESE £1.80	SALSA POTATO £1.80 
Vegetarian Main Dish	HOMEMADE CHICKPEA & LENTIL CURRY £1.80	CHINESE VEG NOODLES £1.85 	CHEESE PASTIE & CHIPS £2.10	PAV BHAJI IN A BUN WITH SALAD £1.80 	PIZZA OF THE DAY £1.50 
And there is more.....	SANDWICH SELECTION £1.45-£1.85 JACKET POTATO & FILLING £1.85 SALAD BOX £1.90	SAME AS MONDAY	SAME AS MONDAY	SAME AS MONDAY	SAME AS MONDAY
Street Food	Love Joes Curry Pot £1.90 Panini £1.95	Love Joes Curry Pot £1.90 Panini £1.95	Love Joes Curry Pot £1.90 Panini £1.95	Love Joes Curry Pot £1.90 Panini £1.95	Love Joes Curry Pot £1.90 Panini £1.95
Italian Daily Special	Pasta King Sauce of the Day £1.90	Pasta King Sauce of the Day £1.90	Pasta King Sauce of the Day £1.90	Pasta King Sauce of the Day £1.90	Pasta King Sauce of the Day £1.90
Dessert	Fruit Pots 55p-£1.30 Traybake 72p Biscuit 50p Cheese & Crackers 85p	Fruit Pots 55p-£1.30 Traybake 72p Biscuit 50p Cheese & Crackers 85p	Fruit Pots 55p-£1.30 Traybake 72p Biscuit 50p Cheese & Crackers 85p	Fruit Pots 55p-£1.30 Traybake 72p Biscuit 50p Cheese & Crackers 85p	Fruit Pots 55p-£1.30 Traybake 72p Biscuit 50p Cheese & Crackers 85p



# MENU

KEY

5 A DAY

- 1 OF YOUR 5 A DAY

- MEAT-FREE MONDAY

- CHEF'S CHOICE

- PLANT-BASED (VEGAN)

MEAT FREE

MEAT-FREE MONDAY

- MEAT-FREE MONDAY

- CHEF'S CHOICE

- PLANT-BASED (VEGAN)





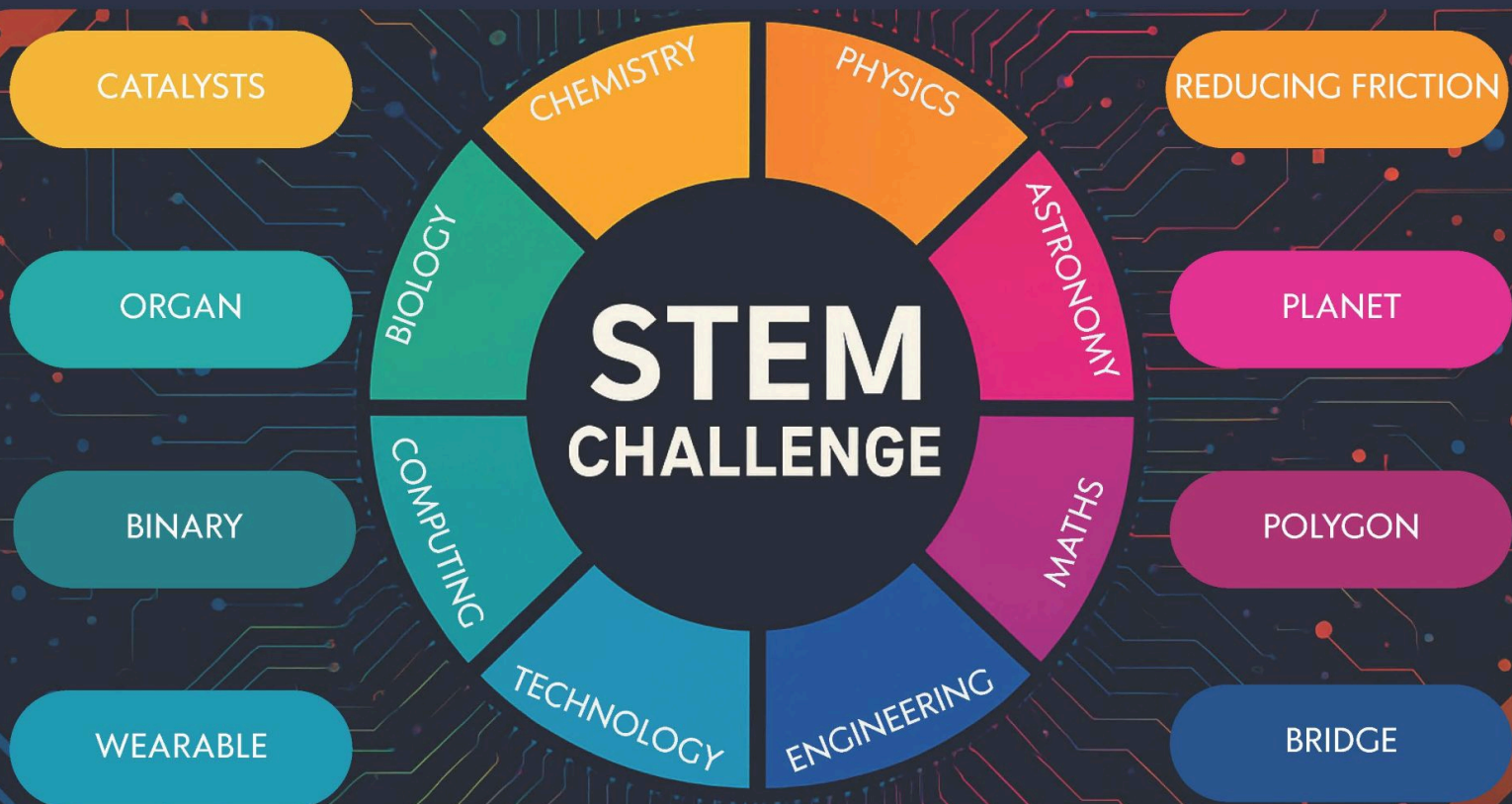
**Sharples**  
SCHOOL

# SHARPLES STEM CHALLENGE

## EXPLORE STEM CHALLENGES

*Complete the challenges!*

CHOOSE A TOPIC FROM THE LIST BELOW.  
CREATE A POSTER, MODEL, PRESENTATION, ETC.  
THE BEST ENTRIES WILL RECEIVE A CORRESPONDING WEDGE.  
COLLECT ALL THE WEDGES TO EARN THE STEM CHALLENGE BADGE!  
NEW CHALLENGES EACH MONTH.  
OPEN TO ALL YEAR GROUPS.



SUBMIT ENTRIES TO MR. FOWLDS (G43) BY 30<sup>TH</sup> JANUARY





# BACC CLUBS



MONDAY	TUESDAY	WEDNESDAY	THURSDAY	FRIDAY
<b>3D Printing Club</b> <i>HGL - G59</i>	<b>Books &amp; Biscuits</b> <i>NTO - Library</i>	<b>Geography Mega Map</b> <i>PFO - U37</i>	<b>Sharples Wings</b> <i>CGK - U30</i>	<b>Chess Club</b> <i>KMC - G46</i>
<b>Sharples Techies</b> <i>GTH - G67</i>	<b>Running Club</b> <i>MHT - AS</i>	<b>Sharples Arrows</b> <i>OJE - U35</i>	<b>Bollywood Dance</b> <i>APA - G67</i>	<b>Disney Club</b> <i>HPA - Library</i>
<b>Y7 Football</b> <i>AHM - Big Astro</i>	<b>Orchestra</b> <i>AKE - G66</i>	<b>Youth Speaks</b> <i>IHA - U12</i>	<b>Gardening Club</b> <i>JB1 - U38</i>	<b>Music Club</b> <i>CAB - G29</i>
<b>Latin Club</b> <i>HEL - U51 AS</i>	<b>Sharples Voices</b> <i>CAB/AKE - AS</i>	<b>Art Club</b> <i>JLO/SSW - G60</i>	<b>Calculated Colouring</b> <i>LDA - G16</i>	<b>Science Club</b> <i>DST - G45</i>
<b>First Aid Club</b> <i>SWI - U41</i>	<b>Choir</b> <i>CAB - G29</i>	<b>Band Rehearsals</b> <i>AKE - AS</i>	<b>Engineering Design Club</b> <i>PMY - G74</i>	<b>History Movie Club</b> <i>IDA - U57</i>
<b>Polyglot Club</b> <i>RQU/SBH - N11</i>	<b>Dodgeball</b> <i>LAL - SH</i>	<b>Anime Club</b> <i>SHU - U15</i>	<b>Rock School</b> <i>CAB - G29</i>	<b>Sharples Stars</b> <i>GTH - G67</i>



# **Year 7 Optional Maths Homework Challenge Maths Photograph Reward Points Available!**



- Take or find a photograph.
- Look for the maths that could be involved.
- Annotate your photograph with examples of the maths you have found.
- More detailed instructions have been uploaded onto student portal.
- Deadline Friday 27<sup>th</sup> February.