



Sharples

SCHOOL

Newsletter

Issue 542
16th January 2026

Year 10 Art & Design Trip to Manchester Galleries



On Thursday 8th January, our Year 10 Art & Design students took part in a curriculum-linked visit to Manchester, beginning with the immersive exhibition David Hockney: Bigger & Closer (not smaller & further away) at Factory International, before visiting The Whitworth Gallery.

Surrounded by large-scale projected imagery, students experienced Hockney's work in an engaging and memorable way, gaining insight into his use of colour, composition, and scale.

The visit proved to be a valuable opportunity in supporting students' GCSE Art & Design studies, helping them develop a deeper understanding of artist research and visual language.

Students then explored The Whitworth galleries, using the collections as a source of first-hand visual research. They produced observational sketches and gathered inspiration to inform their own coursework and creative development.

Throughout the day, students were a credit to themselves and the school, demonstrating excellent behaviour, focus, and enthusiasm, and engaging thoughtfully with the artwork on display.

See the next page for more pictures taken during this visit.

Sharples School, Hill Cot House, Hill Cot Rd. Bolton, BL1 8SN

Tel: 01204 333253

Fax: 01204 333250

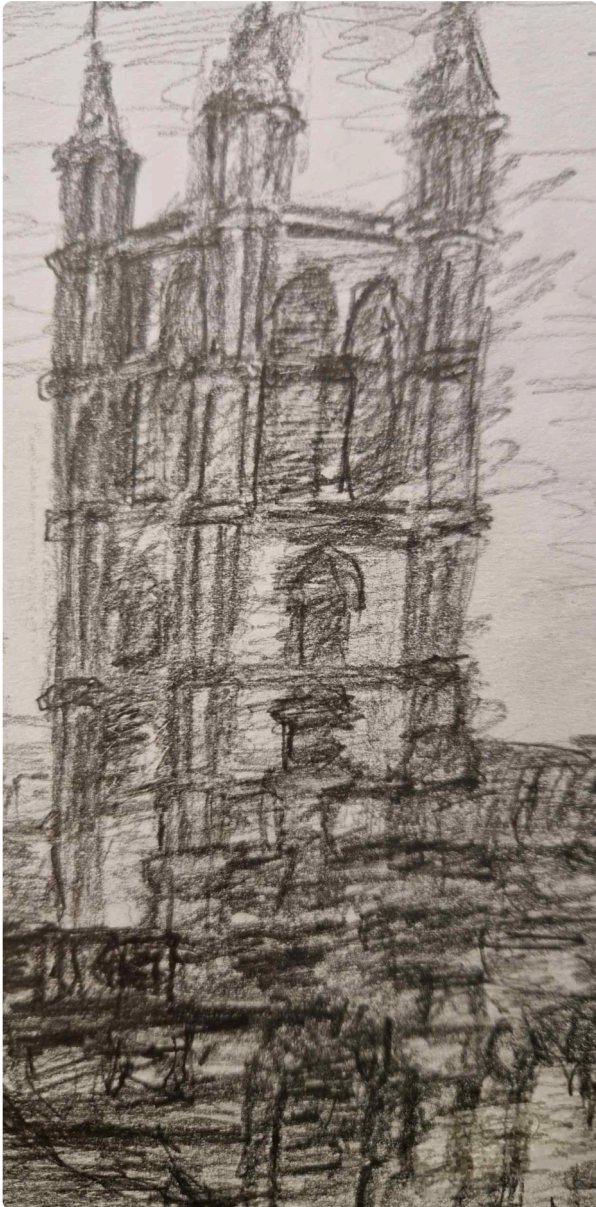
www.SharpleSchool.co.uk



Sharples

SCHOOL

Newsletter



Sharples School, Hill Cot House, Hill Cot Rd. Bolton, BL1 8SN

Tel: 01204 333253

Fax: 01204 333250

www.SharplesSchool.co.uk



Sharples

SCHOOL

Newsletter

Mathematician of the Month



Every month a student is nominated from each of the maths classes for Mathematician of the Month. These students are nominated based on their hard work, enthusiasm and efforts within the lesson.

Well done to December's nominees for fantastic work in maths lessons!

Year 7

Mohammed
Zayaan M
Aqsa P
Lola M
Khadijah M
Amisha M
Holly S
Joseph B
Rayyan P
Mabroor H

Year 8

Ahmad V
Orla A
Kaylen H
Alexa H
Sawsan B
Bernadette L
Lucas S
Eshaal B
Ayesha K

Year 9

Frankie S
Grace H
Lolita L
Zara A
Haris I
Saarah P
Mahisha S
Aaliyah S
Zain M
Kevin K

Year 10

Daniel C
Zainab A
Lucas P
Zahir E
Muhammad
Hamza C
Fatima I
Safiyya K
Jonathan S
Aameina M

Year 11

Corey M
Annie H
Atiqah M
Safa S
Gabija V
Omelkhier B
Aisha S
Sumayyah V
Mai G
Aamina P



Sharples

SCHOOL

Newsletter

Science in Action at Sharples



It's been a busy and engaging week in science at Sharples, with pupils across the school exploring new ideas, developing practical skills and building confidence.

Year 7 pupils have begun moving on to new topics; from exploring how forces affect movement to discovering how characteristics are passed on, pupils are starting to see how science explains both the everyday and the extraordinary. Some Year 8 classes have been putting their investigative skills into practice by exploring streamlining, testing how different shapes move through a viscous fluid and analysing the results.

Year 9 pupils have completed all three of their Science Pre-Options Assessments this week; a huge well done to everyone for their focus and effort.

This week also marked the first session of the "I Can Do Physics!" club at The Oaks Primary School. Pupils explored density through practical investigations, making predictions and testing ideas about floating and sinking.

Love science, problem-solving or being creative? The Sharples STEM Challenge is here — see the poster towards the back of the newsletter to find out how to take part.

Sharples School, Hill Cot House, Hill Cot Rd. Bolton, BL1 8SN

Tel: 01204 333253

Fax: 01204 333250

www.SharplesSchool.co.uk



Sharples

SCHOOL

Newsletter

Sharples School launch RHS Plants for Well Being Pilot

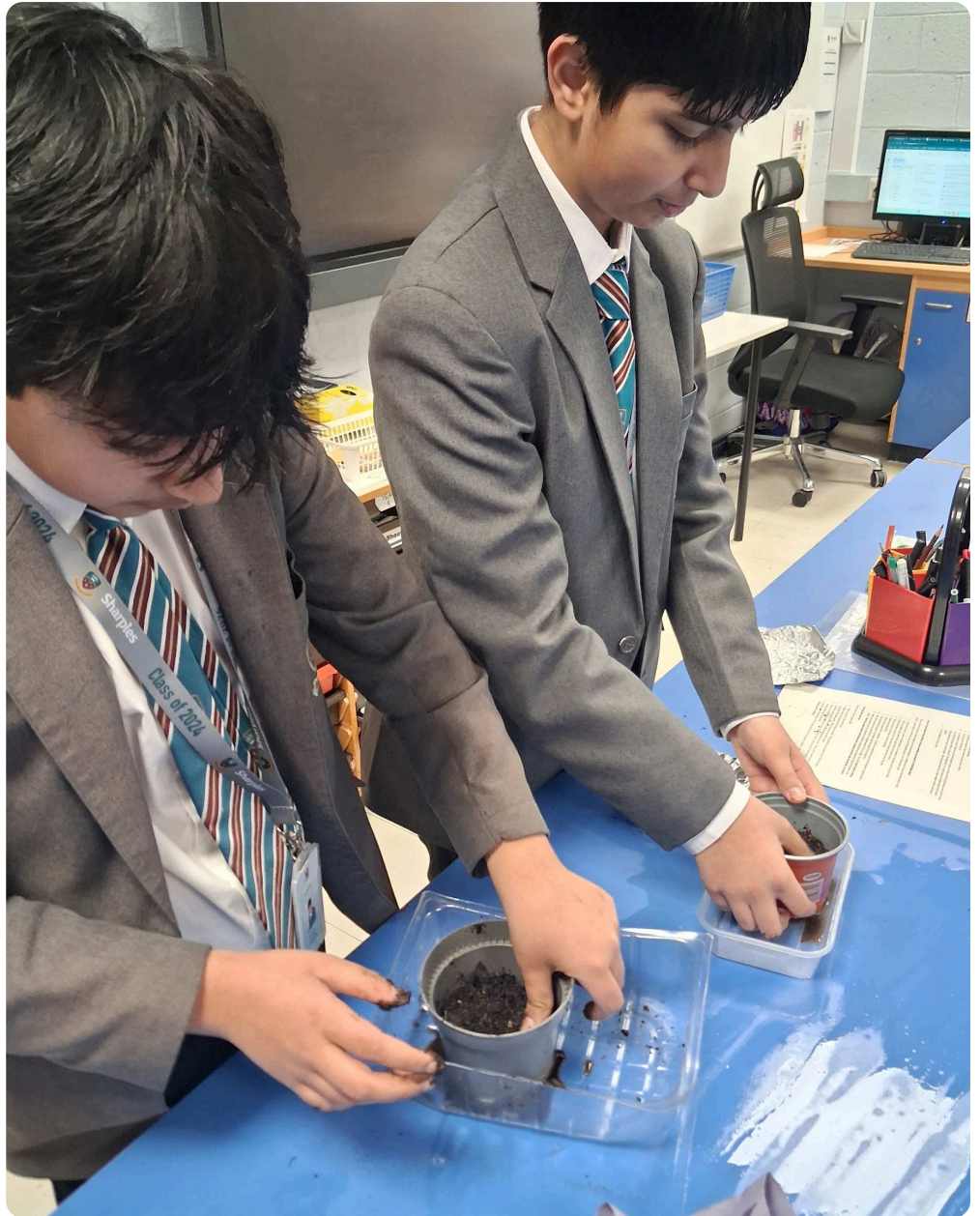
Sharples School is one of only 26 schools nationally to be participating in the Plants for Wellbeing pilot, developed by the Royal Horticultural Society in consultation with Anna Freud, a mental health charity for children and young people.

Schools in London and the North West were invited to apply to participate in this pilot ahead of a national rollout and our school has been selected.

The Plants for Wellbeing pilot offers a whole school approach for exploring how working with plants can help develop student's emotional awareness, social connection and self-regulation, bringing discussions about mental wellbeing into everyday school life. A whole-school approach enables us to embed the

connection between plants and wellbeing into our school's culture, with flexible and accessible content designed to give the whole school the opportunity to experience the wellbeing benefits of being close to and caring for plants.

There is a growing body of research showing that interacting with plants and spending time outdoors can support overall wellbeing. In forms, students had fun planting seeds (peas, sweet peas and microgreens). Nurturing plants and a connection to nature is a tool for well-being as well as a screen-free hobby and life skill. We look forward to seeing our seedlings develop in the near future.





Sharples

SCHOOL

Newsletter

Girls Represent Our Community in Nike Campaign with the FA



Some of our pupils recently took part in a Nike shoot alongside Bolton United Girls Football Club, as part of a campaign celebrating Muslim girls in sport.

The girls were not only involved in the photoshoot but were also interviewed about how they are able to participate in sport without compromising their faith. They spoke confidently about the importance of inclusion and shared how sports sessions can be adapted to ensure everyone feels comfortable, respected, and supported.

This was a fantastic opportunity for the pupils to represent themselves, their community, and the values of confidence, resilience, and aspiration. It also highlights how school and community initiatives can work hand-in-hand to support young people both in and out of school.



Sharples

SCHOOL

Newsletter

Dates for your Diary

Monday 12th to Friday 23rd January: Year 9 Summative Assessments

Wednesday 21st January: Year 10 Mock Interviews (9:15 – 12:55)

Friday 23rd January: The Glass House Visit (11:15 – 15:15)

Friday 23rd January: Year 7 Sleep at The Deep - Boys

Attendance Information

Reporting an absence:

If your child is too ill to attend school, please contact the school before 9.30am with full details of your child's illness/symptoms. The attendance email is the easiest way to contact school as the phone line can get very busy.

The school attendance email is: attendance@sharplesschool.co.uk

If we are unable to make contact and you do not provide a reason for your child's absence, this absence will be recorded as unauthorised.

Attendance Data

Year Groups attendance this week:

7 = 94.19%
8 = 96.57%
9 = 95.79%
10 = 94.11%
11 = 93.65%

Best forms this week:

7Ples4 = 100%
8Shar4 = 99.56%
9Shar2 = 99.60%
10Ples4 = 99.49%
11Shar5 = 99.17%

287 pupils have achieved 100% this academic year

Career of the Week: Health Visitor

They work with families with a child aged 0-5 to identify health needs, promote healthy lifestyles and prevent illness.

Average Salary: £ £39,000 £55,000
Starter Experienced

Typical hours: 38 to 42
(per week) a week

You could work: evenings
on a rota



Qualifications:

- You need to be a registered midwife, adult, child, mental health or learning disability nurse to apply for a health visiting training programme.
- 5 GCSEs at grades 9 to 4 (A* to C), or equivalent, including English, maths and science.
- 2 or 3 A levels, including a science, or a level 3 diploma or access to higher education in health, science or nursing.

Skills required:

- Customer service skills.
- The ability to work well with others.
- The ability to use your initiative.
- To be flexible and open to change.
- Sensitivity and understanding.
- To enjoy working with other people.
- The ability to come up with new ways of doing things.

Relevant Subjects:

- Science, Health and Social Care, Maths and English.

Information sourced from: <https://nationalcareers.service.gov.uk/job-profiles/health-visitor>



Careers & Enterprise
at Sharples School

Sharples School, Hill Cot House, Hill Cot Rd. Bolton, BL1 8SN

Tel: 01204 333253

Fax: 01204 333250

www.SharplesSchool.co.uk



Sharples

SCHOOL

Newsletter



PE Lunch Time Clubs - This Half Term

MONDAY	TUESDAY	WEDNESDAY	THURSDAY	FRIDAY
Y7 Football (Big Astro) - AHM	Y8 Football (Big Astro) - PGR	Y7 Football (Big Astro) - AHM	Y8 Football (Big Astro) - AHM	Y9 Football (Big Astro) - AHM
Y11 Football (Small astro) JBA	Y10 Football (Small astro) JBA	Y11 Football (Small astro) JBA	Y11 Football (Small astro) JBA	Y11 Football (Small Astro) - JBA
Netball Yr 7/8 (SH) - LAL	KS3 Dodgeball (SH) - LAL/AHM	Just Dance- all years (SH) - LAL/PGR	Basketball (SH) - LAL	Y7 Girls Football (SH) - LAL
	Sports studies catch up/KS3 hmwk- AHM			



PE After School Clubs - This Half Term

MONDAY	TUESDAY	WEDNESDAY	THURSDAY	FRIDAY
Y7 Football practice	Y8 Football practice	Staff meeting- no clubs	KS4 Fitness Suite- SHAR	PE detentions
KS3 boys Swimming Club	KS4 Fitness Suite- SHAR		Girls Football- all years	
Netball - all years	Running Club- all years		U16 basketball @ Smithills	
KS3 Girls football v ESSA (h)	Racquets- all years			

Week beginning 19th Jan

Sharples School, Hill Cot House, Hill Cot Rd. Bolton, BL1 8SN

Tel: 01204 333253

Fax: 01204 333250

www.SharplesSchool.co.uk



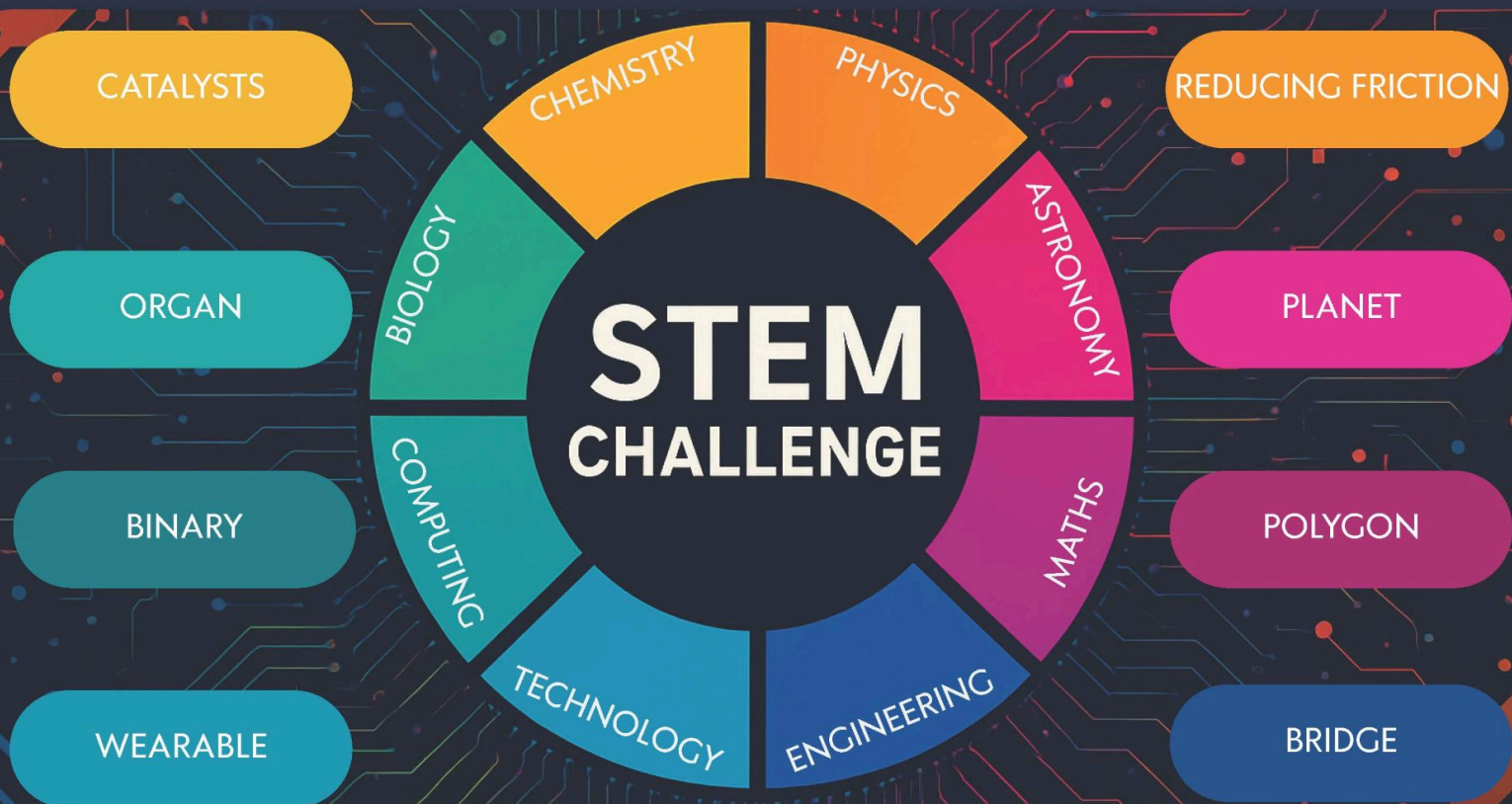
Sharples
SCHOOL

SHARPLES STEM CHALLENGE

EXPLORE STEM CHALLENGES

Complete the challenges!

CHOOSE A TOPIC FROM THE LIST BELOW.
CREATE A POSTER, MODEL, PRESENTATION, ETC.
THE BEST ENTRIES WILL RECEIVE A CORRESPONDING WEDGE.
COLLECT ALL THE WEDGES TO EARN THE STEM CHALLENGE BADGE!
NEW CHALLENGES EACH MONTH.
OPEN TO ALL YEAR GROUPS.



SUBMIT ENTRIES TO MR. FOWLDS (G43) BY 30TH JANUARY

ENGLISH NEWSLETTER

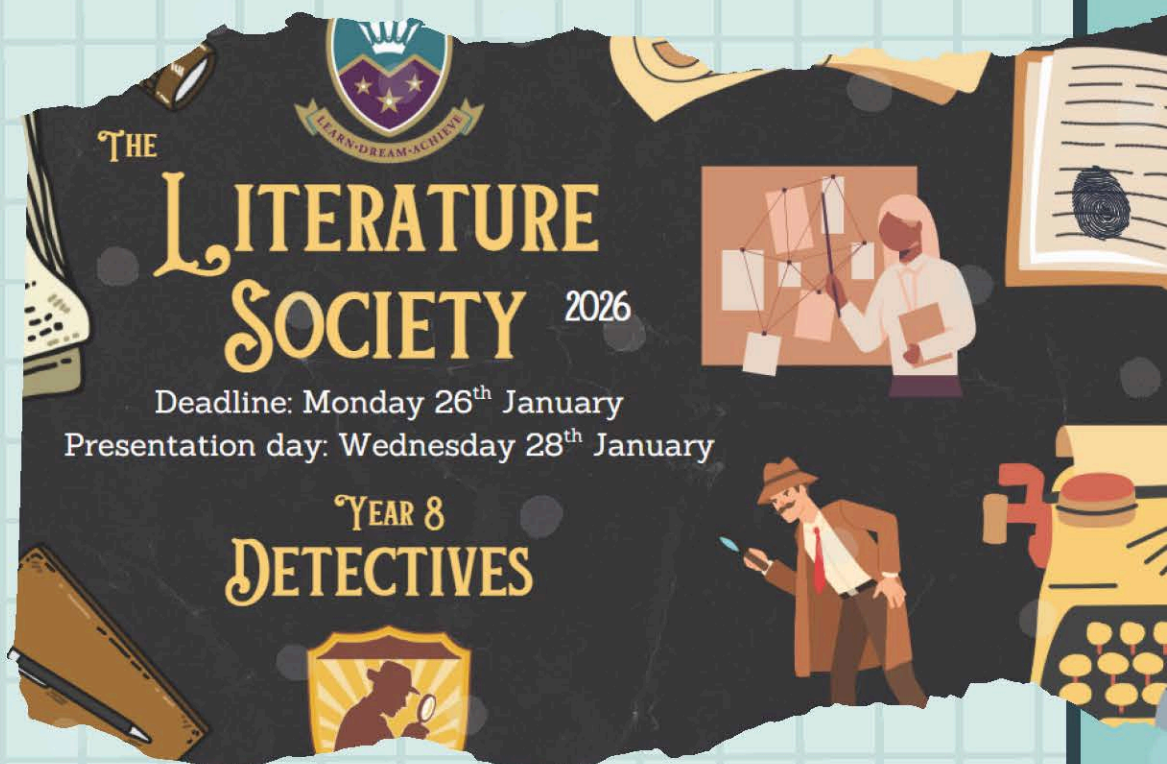
FRIDAY 16TH JAN



YEAR 8 LITERATURE SOCIETY: DETECTIVES

It's Year 8's turn to get involved in Literature Society and create projects on the topic of Detectives and Mystery. It's still not too late to get involved but you must visit Mr Husayn in U15 as soon as possible to take part.

Winners will receive treats, up to 100 reward points, and a trip at the end of the year!





MACBETH TRIP



Year 8 have an exciting opportunity you must act quick! Since our pupils are studying Macbeth this term there will be a trip to Octagon theatre to watch the play live on stage.

This is on a first come first serve basis with only 20 places!



William Shakespeare's
MACBETH

WHAT ELSE IS ON?

Books and Biscuits



Tuesday
Lunchtime
in the library



Anime Club Wednesday
lunch in U15 -

Great to see so
many join us on the
first weeks back!



WORD OF THE WEEK

Scrutinise

= To examine closely.

E.g. "The detective
scrutinised the
evidence carefully."

SHARPLES RADIO

Over the last few weeks, Mrs Smith and The Sharples Radio Team have been researching, recording, and editing their first podcast.

To find out about this new school radio adventure check out the podcast on the school website.





BACC CLUBS

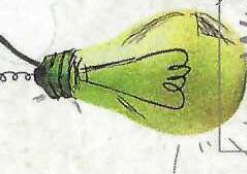


MONDAY	TUESDAY	WEDNESDAY	THURSDAY	FRIDAY
3D Printing Club <i>HGL - G59</i>	Books & Biscuits <i>NTO - Library</i>	Geography Mega Map <i>PFO - U37</i>	Sharples Wings <i>CGK - U30</i>	Chess Club <i>KMC - G46</i>
Sharples Techies <i>GTH - G67</i>	Running Club <i>MHT - AS</i>	Sharples Arrows <i>OJE - U35</i>	Bollywood Dance <i>APA - G67</i>	Disney Club <i>HPA - Library</i>
Y7 Football <i>AHM - Big Astro</i>	Orchestra <i>AKE - G66</i>	Youth Speaks <i>IHA - U12</i>	Gardening Club <i>JB1 - U38</i>	Music Club <i>CAB - G29</i>
Latin Club <i>HEL - U51 AS</i>	Sharples Voices <i>CAB/AKE - AS</i>	Art Club <i>JLO/SSW - G60</i>	Calculated Colouring <i>LDA - G16</i>	Science Club <i>DST - G45</i>
First Aid Club <i>SWI - U41</i>	Choir <i>CAB - G29</i>	Band Rehearsals <i>AKE - AS</i>	Engineering Design Club <i>PMY - G74</i>	History Movie Club <i>IDA - U57</i>
Polyglot Club <i>RQU/SBH - N11</i>	Dodgeball <i>LAL - SH</i>	Anime Club <i>SHU - U15</i>	Rock School <i>CAB - G29</i>	Sharples Stars <i>GTH - G67</i>

Year 7 Optional Maths Homework Challenge Maths Photograph Reward Points Available!



- Take or find a photograph.
- Look for the maths that could be involved.
- Annotate your photograph with examples of the maths you have found.
- More detailed instructions have been uploaded onto student portal.
- Deadline Friday 27th February.



WATT'S FOR LUNCH? FUEL YOUR DAY WITH A HEALTHY SCHOOL LUNCH

Week 3	Monday	Tuesday	Wednesday	Thursday	Friday
Main Dish	HOMEMADE MEAT PIE & MASH POTATO £1.85 5 A DAY	INDIAN CURRY OF THE DAY £2.10 5 A DAY	CHEESEBURGER & CHIPS £2.10	HOMEMADE VEG LASAGNE £1.85 5 A DAY	POTATO & SPINACH CURRY £1.85 5 A DAY
Vegetarian Main Dish	QUORN BOLOGNAISE £1.80	VEG BIRYANI £1.80 5 A DAY	VEG BURGER & CHIPS £2.10 5 A DAY	CHEESE FLAN £1.85 5 A DAY	PIZZA OF THE DAY £1.50 5 A DAY
And there is more.....	SANDWICH SELECTION £1.45 - £1.85 JACKET POTATO & FILLING £1.85 SALAD BOX £1.90	SAME AS MONDAY	SAME AS MONDAY	SAME AS MONDAY	SAME AS MONDAY
Street Food	Love Joes Curry Pot £1.90 Panini £1.95	Love Joes Curry Pot £1.90 Panini £1.95	Love Joes Curry Pot £1.90 Panini £1.95	Love Joes Curry Pot £1.90 Panini £1.95	Love Joes Curry Pot £1.90 Panini £1.95
Italian Daily Special	Pasta King Sauce of the Day £1.90	Pasta King Sauce of The Day £1.90	Pasta King Sauce of the Day £1.90	Pasta King Sauce of the Day 1.90	Pasta King Sauce of the Day £1.90
Dessert	Fruit Pots 55p-£1.30 Traybake 72p Biscuit 50p Cheese & Crackers 85p	Fruit Pots 55p-£1.30 Traybake 72p Biscuit 50p Cheese & Crackers 85p	Fruit Pots 55p-£1.30 Traybake 72p Biscuit 50p Cheese & Crackers 85p	Fruit Pots 55p-£1.30 Traybake 72p Biscuit 50p Cheese & Crackers 85p	Fruit Pots 55p-£1.30 Traybake 72p Biscuit 50p Cheese & Crackers 85p

MENU



PF - PLANT-BASED (VEGAN)

MEAT FREE - MEAT-FREE MONDAY



BLACKBURN ROAD A666 TEMPORARY ONE-WAY TRAFFIC & SIDE STREET CLOSURES

THE BOROUGH COUNCIL OF BOLTON
ROAD TRAFFIC REGULATION ACT 1984 S.14

The Council intends to make an order, operative from 12 January 2026 for 6 weeks approx, the effect of which will be to implement a one-way traffic restriction on Blackburn Road, from Moss Bank Way to Prospect Street to allow resurfacing works to take place. Permitted direction of travel will be northbound.

Diversion routes for southbound traffic will be signed, and the restriction will be implemented in the following phases with a view to minimizing disruption to traffic:

Moss Bank Way – Old Road

Night working (7pm-6am). Alternate route will be Crompton Way, Tonge Moor Road, Folds Road, Turton Street, Kay Street. This phase will involve side street closures of Brierly Street & Newnham Street (Blackburn Road to Holland Street), and Seymour Road (Blackburn Road to Palm Street)

Old Road – Waters Meeting Road

Weekend working (8am-6pm). Alternate route will be Crompton Way, Tonge Moor Road, Folds Road, Turton Street, Kay Street. This phase will involve side street closures of Hartland Court and Greenwood Vale (Blackburn Road to Greenwood Vale South)

Waters Meeting Road – Prospect Street

Off-peak working (9.30am-3pm). Alternate route will be Waters Meeting Road. This phase will involve side street closures of Elmfield Street/Baythorpe Street (Blackburn Road to Back Blackburn Road), Ulleswater Street (Blackburn Road to Back Grasmere Street), Chalfont Street/Draycott Street East/Hibbert Street/Blackbank Street (Blackburn Road to Back Latham Street)

The Order will end after 18 months or on completion of the works whichever first occurs.

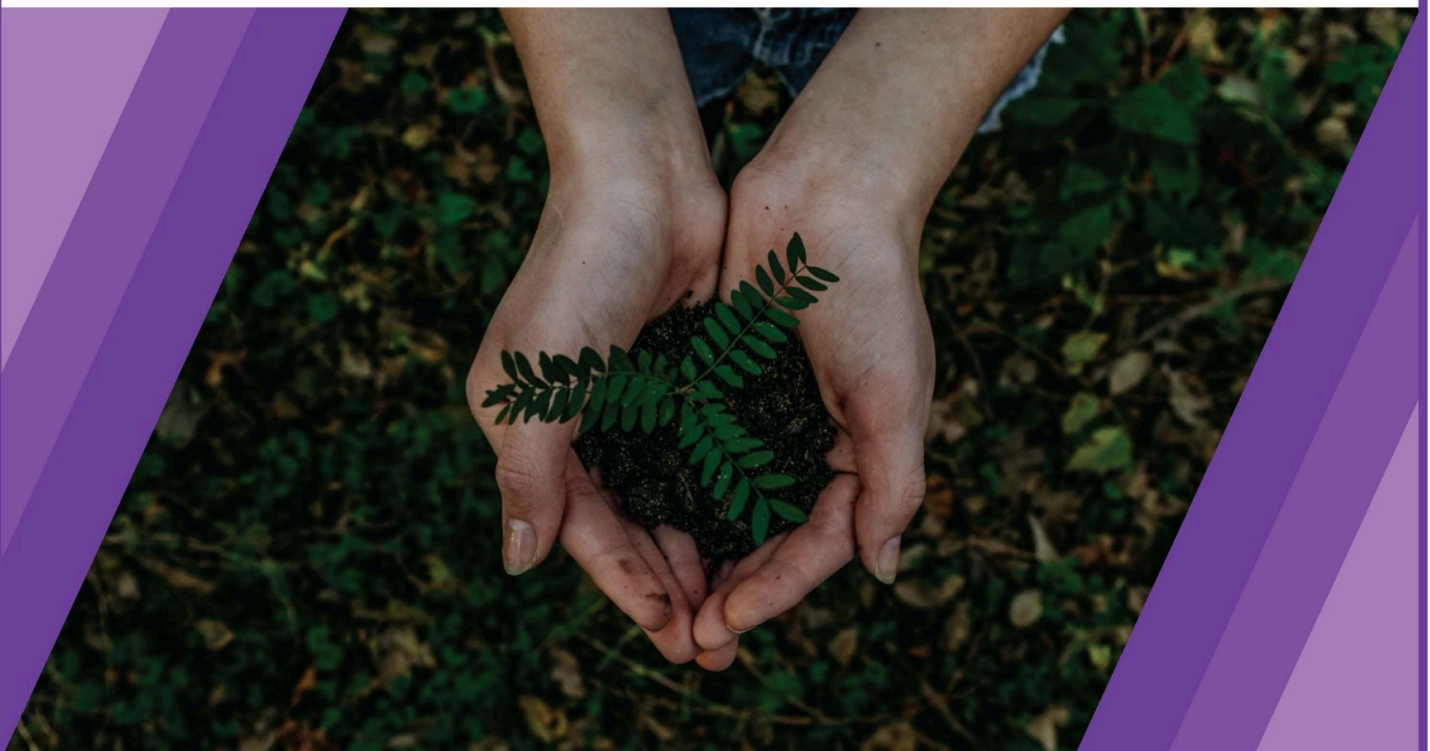
Bolton Council. 22 December 2025.
bolton.gov.uk/trafficorders

**CLICK HERE
TO VIEW THE
FULL PDF DOCUMENT
INCLUDING MAPS**

Parent Webinars with GT Scholars



***Help Your Teen Develop a Growth Mindset:
Discover the #1 Tool to Empower Your Teen
& Set Them Up for Success***



FREE Parent Webinar January 2026

Date: Tue 20th Jan 2026

Time: 7:30 - 8:45pm (UK time)

Sign up to join us LIVE or get
access to the replay:

gtscholars.org/parent-webinar





Edge Hill
University

Mathematics Challenge

Year 9 Students

Are you good at solving problems and working as a team? Then this could be the challenge for you.

Create a team of 3-5 members and come along to G22 on a Monday lunch time to enter the Mathematics Challenge.

Speak to your maths teacher or see Mrs McCawley in G22 for more details.